

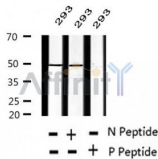
Phospho-Cyclin E1 (Thr77) Ab

Cat.#: AF2334
 Size: 100ul,200ul

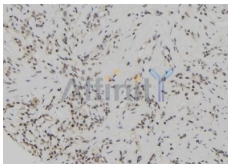
Concn.: 1mg/ml
 Source: Rabbit

Mol.Wt.: 48kDa
 Clonality: Polyclonal

- Application:** WB 1:500-1:2000, IHC 1:50-1:200
- Reactivity:** Human,Mouse
- Purification:** The Ab is from purified rabbit serum by affinity purification via sequential chromatography on phospho- and non-phospho-peptide affinity columns.
- Specificity:** Phospho-Cyclin E1 (Thr77) Ab detects endogenous levels of Cyclin E1.
- Immunogen:** A synthesized peptide derived from human Cyclin E1 around the phosphorylation site of Thr77.
- Uniprot:** P24864
- Subcellular Location:** Nucleus.
- Tissue Specificity:** Highly expressed in testis and placenta. Low levels in bronchial epithelial cells.
- Similarity:** Belongs to the cyclin family. Cyclin E subfamily.
- Storage Condition and Buffer:** Rabbit IgG in phosphate buffered saline , pH 7.4, 150mM NaCl, 0.02% sodium azide and 50% glycerol.Store at -20 °C.Stable for 12 months from date of receipt



Western blot analysis of extracts of 293 cells, using Phospho-Cyclin E1 (Thr77) Ab.



AF2334 at 1/100 staining Human gastric tissue by IHC-P. The sample was formaldehyde fixed and a heat mediated antigen retrieval step in citrate buffer was performed. The sample was then blocked and incubated with the Ab for 1.5 hours at 22°C. An HRP conjugated goat anti-rabbit Ab was used as the secondary.

IMPORTANT: For western blot, incubate membrane with diluted Ab in 5% w/v milk, 1X TBS, 0.1% Tween@20 at 4°C with gentle shaking, overnight.

For Research Use Only. Not for use in diagnostic and therapeutic procedures. Not for resale without express authorization.