

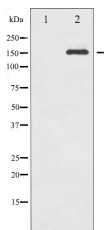
Phospho-CD45 (Ser1007) Ab

Cat.#: AF3127
Size: 100ul,200ul

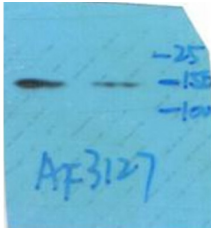
Concn.: 1mg/ml
Source: Rabbit

Mol.Wt.: 150kDa
Clonality: Polyclonal

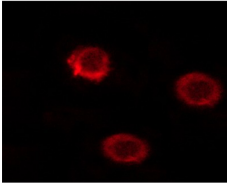
Application:	WB 1:500-1:2000 IF/ICC 1:100-1:500
Reactivity:	Human,Mouse,Rat
Purification:	The Ab is from purified rabbit serum by affinity purification via sequential chromatography on phospho- and non-phospho-peptide affinity columns.
Specificity:	Phospho-CD45 (Ser1007) Ab detects endogenous levels of CD45 only when phosphorylated at Serine 1007
Immunogen:	A synthesized peptide derived from human CD45 around the phosphorylation site of Serine 1007
Uniprot:	P08575
Description:	The protein encoded by this gene is a member of the protein tyrosine phosphatase (PTP) family. PTPs are known to be signaling molecules that regulate a variety of cellular processes including cell growth, differentiation, mitotic cycle, and oncogenic transformation.
Subcellular Location:	Membrane. Membrane raft. Colocalized with DPP4 in membrane rafts.
Similarity:	The first PTPase domain interacts with SKAP1.Belongs to the protein-tyrosine phosphatase family. Receptor class 1/6 subfamily.
Storage Condition and Buffer:	Rabbit IgG in phosphate buffered saline , pH 7.4, 150mM NaCl, 0.02% sodium azide and 50% glycerol.Store at -20 °C.Stable for 12 months from date of receipt



Western blot analysis of CD45 phosphorylation expression in TNF treated HeLa whole cell lysates,The lane on the left is treated with the antigen-specific peptide.



Western blot analysis of Phospho-CD45 (Ser1007) Ab expression in TNF treated HeLa cells lysates. The lane on the right is treated with the antigen-specific peptide.



AF3127 staining HeLa cells by ICC/IF. Cells were fixed with PFA and permeabilized in 0.1% saponin prior to blocking in 10% serum for 45 minutes at 37°C. The primary Ab was diluted 1/400 and incubated with the sample for 1 hour at 37°C. A Alexa Fluor® 594 conjugated goat polyclonal to rabbit IgG (H+L), diluted 1/600 was used as secondary Ab.

IMPORTANT: For western blot, incubate membrane with diluted Ab in 5% w/v milk , 1X TBS, 0.1% Tween@20 at 4°C with gentle shaking, overnight.

For Research Use Only. Not for use in diagnostic and therapeutic procedures. Not for resale without express authorization.