

Phospho-Na,K-ATPase 1 (Tyr10) Ab

| | | |
|------------------------|----------------|-----------------------|
| Cat.#: AF4391 | Concn.: 1mg/ml | Mol.Wt.: 100kDa |
| Size: 50ul,100ul,200ul | Source: Rabbit | Clonality: Polyclonal |

Application: WB 1:500-1:2000

Reactivity: Human,Mouse,Rat

Purification: The Ab is from purified rabbit serum by affinity purification via sequential chromatography on phospho- and non-phospho-peptide affinity columns.

Specificity: Phospho-Na,K-ATPase 1 (Tyr10) Ab detects endogenous levels of Na,K-ATPase 1 only when phosphorylated at Tyr10

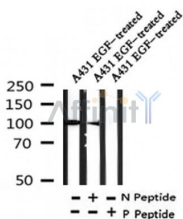
Immunogen: A synthesized peptide derived from human Na,K-ATPase 1 around the phosphorylation site of Tyr10

Uniprot: P05023

Subcellular Location: Cell membrane. Melanosome. Identified by mass spectrometry in melanosome fractions from stage I to stage IV.

Similarity: Belongs to the cation transport ATPase (P-type) (TC 3.A.3) family. Type IIC subfamily. [View classification]

Storage Condition and Buffer: Rabbit IgG in phosphate buffered saline , pH 7.4, 150mM NaCl, 0.02% sodium azide and 50% glycerol.Store at -20 °C.Stable for 12 months from date of receipt



Western blot analysis of Phospho-Na,K-ATPase 1 (Tyr10) in lysates of A431 EGF-treated, using Phospho-Na,K-ATPase 1 (Tyr10) Ab(AF4391).

IMPORTANT: For western blot, incubate membrane with diluted Ab in 5% w/v milk , 1X TBS, 0.1% Tween@20 at 4°C with gentle shaking, overnight.

For Research Use Only. Not for use in diagnostic and therapeutic procedures. Not for resale without express authorization.