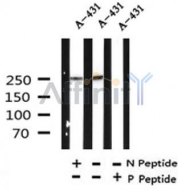


## Phospho-Desmoplakin (Ser165/166) Ab

Cat.#: AF4409	Concn.: 1mg/ml	Mol.Wt.: 250kDa
Size: 50ul,100ul,200ul	Source: Rabbit	Clonality: Polyclonal

Application:	WB 1:500-1:2000
Reactivity:	Human,Mouse,Rat
Purification:	The Ab is from purified rabbit serum by affinity purification via sequential chromatography on phospho- and non-phospho-peptide affinity columns.
Specificity:	Phospho-Desmoplakin (Ser165/166) Ab detects endogenous levels of Desmoplakin only when phosphorylated at Ser165/166
Immunogen:	A synthesized peptide derived from human Desmoplakin around the phosphorylation site of Ser165/166
Uniprot:	P15924
Subcellular Location:	Cell junction, desmosome. Cytoplasm, cytoskeleton. Cell membrane. Innermost portion of the desmosomal plaque. Colocalizes with epidermal KRT5-KRT14 and simple KRT8-KRT18 keratins and VIM intermediate filaments network (PubMed:12802069). Localizes at the intercalated disk in cardiomyocytes (By similarity).
Tissue Specificity:	Isoform DPI is apparently an obligate constituent of all desmosomes. Isoform DPII resides predominantly in tissues and cells of stratified origin.
Similarity:	Its association with epidermal and simple keratins is dependent on the tertiary structure induced by heterodimerization of these intermediate filaments proteins and most likely involves recognition sites located in the rod domain of these keratins.The N-terminal region is required for localization to the desmosomal plaque and interacts with the N-terminal region of plakophilin 1.The three tandem plakin repeat regions in the C-terminus mediate binding to intermediate filaments.Belongs to the plakin or cytolinker family.
Storage Condition and Buffer:	Rabbit IgG in phosphate buffered saline , pH 7.4, 150mM NaCl, 0.02% sodium azide and 50% glycerol.Store at -20 °C.Stable for 12 months from date of receipt



Western blot analysis of Phospho-Desmoplakin (Ser165/166) in lysates of A-431, using Phospho-Desmoplakin (Ser165/166) Ab(AF4409).

**IMPORTANT:** For western blot, incubate membrane with diluted Ab in 5% w/v milk , 1X TBS, 0.1% Tween@20 at 4°C with gentle shaking, overnight.

For Research Use Only. Not for use in diagnostic and therapeutic procedures. Not for resale without express authorization.