

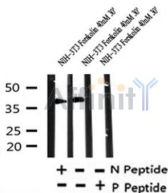
Phospho-CDK9 (Thr186) Ab

Cat.#: AF4440
Size: 50ul,100ul,200ul

Concn.: 1mg/ml
Source: Rabbit

Mol.Wt.: 43kDa
Clonality: Polyclonal

Application:	WB 1:500-1:2000
Reactivity:	Human,Mouse,Rat
Purification:	The Ab is from purified rabbit serum by affinity purification via sequential chromatography on phospho- and non-phospho-peptide affinity columns.
Specificity:	Phospho-CDK9 (Thr186) Ab detects endogenous levels of CDK9 only when phosphorylated at Thr186
Immunogen:	A synthesized peptide derived from human CDK9 around the phosphorylation site of Thr186
Uniprot:	P50750
Subcellular Location:	Nucleus.
Tissue Specificity:	Ubiquitous.
Similarity:	Belongs to the protein kinase superfamily. CMGC Ser/Thr protein kinase family. CDC2/CDKX subfamily.
Storage Condition and Buffer:	Rabbit IgG in phosphate buffered saline , pH 7.4, 150mM NaCl, 0.02% sodium azide and 50% glycerol.Store at -20 °C.Stable for 12 months from date of receipt



Western blot analysis of Phospho-CDK9 (Thr186) in lysates of NIH-3T3 Forskolin 40nM 30', using Phospho-CDK9 (Thr186) Ab(AF4440).

IMPORTANT: For western blot, incubate membrane with diluted Ab in 5% w/v milk , 1X TBS, 0.1% Tween@20 at 4°C with gentle shaking, overnight.

For Research Use Only. Not for use in diagnostic and therapeutic procedures. Not for resale without express authorization.