

RapGEF1 (Phospho-Thr1071) Ab

| | | |
|------------------------|----------------|-----------------------|
| Cat.#: AF4469 | Concn.: 1mg/ml | Mol.Wt.: 121kDa |
| Size: 50ul,100ul,200ul | Source: Rabbit | Clonality: Polyclonal |

Application: WB 1:500-1:2000

Reactivity: Human,Mouse,Rat

Purification: The Ab is from purified rabbit serum by affinity purification via sequential chromatography on phospho-peptide and non-phospho-peptide affinity columns.

Specificity: RapGEF1 (Phospho-Thr1071) Ab detects endogenous levels of RapGEF1 only when phosphorylated at Thr1071

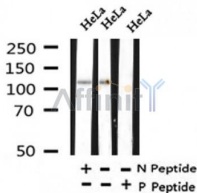
Immunogen: A synthesized peptide derived from human RapGEF1 around the phosphorylation site of Thr1071

Uniprot: Q13905

Subcellular Location: Endosome;

Tissue Specificity: Ubiquitously expressed in adult and fetus. Expression is high in adult skeletal muscle and placenta and in fetal brain and heart. Low levels of expression in adult and fetal liver.

Storage Condition and Buffer: Rabbit IgG in phosphate buffered saline , pH 7.4, 150mM NaCl, 0.02% sodium azide and 50% glycerol.Store at -20 °C.Stable for 12 months from date of receipt



Western blot analysis of RapGEF1 (Phospho-Thr1071) in lysates of HeLa , using RapGEF1 (Phospho-Thr1071) Ab(AF4469).

IMPORTANT: For western blot, incubate membrane with diluted Ab in 5% w/v milk , 1X TBS, 0.1% Tween@20 at 4°C with gentle shaking, overnight.

For Research Use Only. Not for use in diagnostic and therapeutic procedures. Not for resale without express authorization.