

## Phospho-GDF9(Tyr394) Ab

|                        |                |                       |
|------------------------|----------------|-----------------------|
| Cat.#: AF7035          | Concn.: 1mg/ml | Mol.Wt.: 51kDa        |
| Size: 50ul,100ul,200ul | Source: Rabbit | Clonality: Polyclonal |

**Application:** WB 1:500-1:2000

**Reactivity:** Human,Mouse,Rat

**Purification:** The Ab is from purified rabbit serum by affinity purification via sequential chromatography on phospho- and non-phospho-peptide affinity columns.

**Specificity:** Phospho-GDF9(Tyr394) Ab detects endogenous levels of GDF9 only when phosphorylated at Tyr394

**Immunogen:** A synthesized peptide derived from human GDF9 around the phosphorylation site of Tyr394

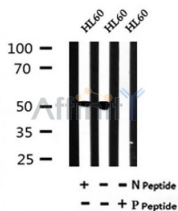
**Uniprot:** O60383

**Subcellular Location:** Secreted

**Tissue Specificity:** Expressed in ovarian granulosa cells. Present in oocytes of primary follicles (at protein level).

**Similarity:** Belongs to the TGF-beta family.

**Storage Condition and Buffer:** Rabbit IgG in phosphate buffered saline , pH 7.4, 150mM NaCl, 0.02% sodium azide and 50% glycerol.Store at -20 °C.Stable for 12 months from date of receipt



Western blot analysis of Phospho-GDF9(Tyr394) in lysates of HL60 , using Phospho-GDF9(Tyr394) Ab(AF7035).

**IMPORTANT:** For western blot, incubate membrane with diluted Ab in 5% w/v milk , 1X TBS, 0.1% Tween@20 at 4°C with gentle shaking, overnight.

For Research Use Only. Not for use in diagnostic and therapeutic procedures. Not for resale without express authorization.