

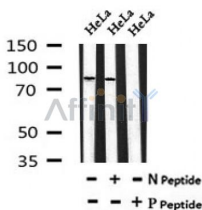
Phospho-PFKM (Ser74) Ab

Cat.#: AF7062
Size: 50ul,100ul,200ul

Concn.: 1mg/ml
Source: Rabbit

Mol.Wt.: 85kDa
Clonality: Polyclonal

Application:	WB 1:500-1:2000
Reactivity:	Human,Mouse,Rat
Purification:	The Ab is from purified rabbit serum by affinity purification via sequential chromatography on phospho- and non-phospho-peptide affinity columns.
Specificity:	Phospho-PFKM (Ser74) Ab detects endogenous levels of PFKM only when phosphorylated at Ser74
Immunogen:	A synthesized peptide derived from human PFKM around the phosphorylation site of Ser74
Uniprot:	P08237
Similarity:	Belongs to the phosphofructokinase type A (PFKA) family. ATP-dependent PFK group I subfamily. Eukaryotic two domain clade "E" sub-subfamily.
Storage Condition and Buffer:	Rabbit IgG in phosphate buffered saline , pH 7.4, 150mM NaCl, 0.02% sodium azide and 50% glycerol.Store at -20 °C.Stable for 12 months from date of receipt



Western blot analysis of Phospho-PFKM (Ser74) in lysates of HeLa , using Phospho-PFKM (Ser74) Ab(AF7062).

IMPORTANT : For western blot, incubate membrane with diluted Ab in 5% w/v milk , 1X TBS, 0.1% Tween@20 at 4°C with gentle shaking, overnight.

For Research Use Only. Not for use in diagnostic and therapeutic procedures. Not for resale without express authorization.