

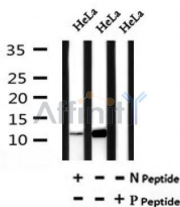
Phospho-TXN(Thr100) Ab

Cat.#: AF7077
Size: 50ul,100ul,200ul

Concn.: 1mg/ml
Source: Rabbit

Mol.Wt.: 12kDa
Clonality: Polyclonal

Application:	WB 1:500-1:2000
Reactivity:	Human,Mouse,Rat
Purification:	The Ab is from purified rabbit serum by affinity purification via sequential chromatography on phospho- and non-phospho-peptide affinity columns.
Specificity:	Phospho-TXN(Thr100) Ab detects endogenous levels of TXN only when phosphorylated at Thr100
Immunogen:	A synthesized peptide derived from human TXN around the phosphorylation site of Thr100
Uniprot:	P10599
Subcellular Location:	Nucleus. Cytoplasm. Secreted. Secreted by a leaderless secretory pathway. Predominantly in the cytoplasm in non irradiated cells. Radiation induces translocation of TRX from the cytoplasm to the nucleus.
Tissue Specificity:	Up-regulated by ionizing radiation.
Similarity:	Belongs to the thioredoxin family.
Storage Condition and Buffer:	Rabbit IgG in phosphate buffered saline , pH 7.4, 150mM NaCl, 0.02% sodium azide and 50% glycerol.Store at -20 °C.Stable for 12 months from date of receipt



Western blot analysis of Phospho-TXN(Thr100) in lysates of HeLa , using Phospho-TXN(Thr100) Ab(AF7077).

IMPORTANT: For western blot, incubate membrane with diluted Ab in 5% w/v milk , 1X TBS, 0.1% Tween@20 at 4°C with gentle shaking, overnight.

For Research Use Only. Not for use in diagnostic and therapeutic procedures. Not for resale without express authorization.