

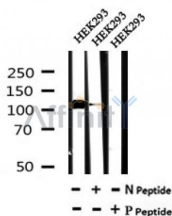
## Phospho-ULK1(Ser450) Ab

Cat.#: AF7147  
Size: 50ul,100ul,200ul

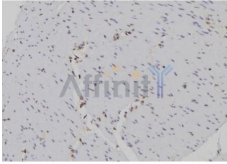
Concn.: 1mg/ml  
Source: Rabbit

Mol.Wt.: 120kDa  
Clonality: Polyclonal

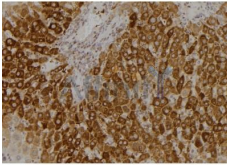
|                               |  |
|-------------------------------|--|
| Application:                  | WB 1:500-1:2000, IHC 1:50-1:200  |
| Reactivity:                   | Human,Mouse  |
| Purification:                 | The Ab is from purified rabbit serum by affinity purification via sequential chromatography on phospho- and non-phospho-peptide affinity columns.  |
| Specificity:                  | Phospho-ULK1(Ser450) Ab detects endogenous levels of ULK1 only when phosphorylated at Ser450   |
| Immunogen:                    | A synthesized peptide derived from human ULK1 around the phosphorylation site of Ser450  |
| Uniprot:                      | O75385   |
| Subcellular Location:         | Cytoplasm, cytosol. Preautophagosomal structure. Under starvation conditions, is localized to punctate structures primarily representing the isolation membrane that sequesters a portion of the cytoplasm resulting in the formation of an autophagosome. |
| Tissue Specificity:           | Ubiquitously expressed. Detected in the following adult tissues: skeletal muscle, heart, pancreas, brain, placenta, liver, kidney, and lung.   |
| Similarity:                   | Belongs to the protein kinase superfamily. Ser/Thr protein kinase family. APG1/unc-51/ULK1 subfamily.  |
| Storage Condition and Buffer: | Rabbit IgG in phosphate buffered saline , pH 7.4, 150mM NaCl, 0.02% sodium azide and 50% glycerol.Store at -20 °C.Stable for 12 months from date of receipt  |



Western blot analysis of Phospho-ULK1(Ser450) in lysates of HEK293, using Phospho-ULK1(Ser450) Ab(AF7147).



AF7147 at 1/100 staining human gastric tissue sections by IHC-P. The tissue was formaldehyde fixed and a heat mediated antigen retrieval step in citrate buffer was performed. The tissue was then blocked and incubated with the Ab for 1.5 hours at 22°C. An HRP conjugated goat anti-rabbit Ab was used as the secondary.



AF7147 at 1/100 staining mouse liver tissue sections by IHC-P. The tissue was formaldehyde fixed and a heat mediated antigen retrieval step in citrate buffer was performed. The tissue was then blocked and incubated with the Ab for 1.5 hours at 22°C. An HRP conjugated goat anti-rabbit Ab was used as the secondary.

**IMPORTANT:** For western blot, incubate membrane with diluted Ab in 5% w/v milk , 1X TBS, 0.1% Tween@20 at 4°C with gentle shaking, overnight.

For Research Use Only. Not for use in diagnostic and therapeutic procedures. Not for resale without express authorization.