

Phospho-ATP1 alpha1/Na+K+ ATPase1 (Tyr542) Ab

Cat.#: AF7201	Concn.: 1mg/ml	Mol.Wt.: 113kDa
Size: 50ul,100ul,200ul	Source: Rabbit	Clonality: Polyclonal

Application: WB 1:500-1:2000, IHC 1:50-1:200

Reactivity: Human,Mouse,Rat

Purification: The Ab is from purified rabbit serum by affinity purification via sequential chromatography on phospho- and non-phospho-peptide affinity columns.

Specificity: Phospho-ATP1 alpha1/Na+K+ ATPase1 (Tyr542) Ab detects endogenous levels of ATP1 alpha1/Na+K+ ATPase1 only when phosphorylated at Tyr542

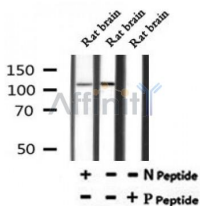
Immunogen: A synthesized peptide derived from human ATP1 alpha1/Na+K+ ATPase1 around the phosphorylation site of Tyr542

Uniprot: P05023

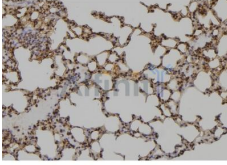
Subcellular Location: Cell membrane. Melanosome. Identified by mass spectrometry in melanosome fractions from stage I to stage IV.

Similarity: Belongs to the cation transport ATPase (P-type) (TC 3.A.3) family. Type IIC subfamily. [View classification]

Storage Condition and Buffer: Rabbit IgG in phosphate buffered saline , pH 7.4, 150mM NaCl, 0.02% sodium azide and 50% glycerol.Store at -20 °C.Stable for 12 months from date of receipt



Western blot analysis of extracts of Rat brain tissue sample,using Phospho-ATP1 alpha1/Na+K+ ATPase1 (Tyr542) Ab(AF7201).



AF7201 at 1/100 staining mouse lung tissue sections by IHC-P. The tissue was formaldehyde fixed and a heat mediated antigen retrieval step in citrate buffer was performed. The tissue was then blocked and incubated with the Ab for 1.5 hours at 22°C. An HRP conjugated goat anti-rabbit Ab was used as the secondary.

IMPORTANT: For western blot, incubate membrane with diluted Ab in 5% w/v milk , 1X TBS, 0.1% Tween@20 at 4°C with gentle shaking, overnight.

For Research Use Only. Not for use in diagnostic and therapeutic procedures. Not for resale without express authorization.