

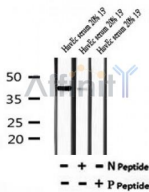
## Phospho-Adrenergic Receptor beta2 (Thr68) Ab

Cat.#: AF7205  
Size: 50ul,100ul,200ul

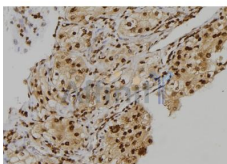
Concn.: 1mg/ml  
Source: Rabbit

Mol.Wt.: 40kDa  
Clonality: Polyclonal

Application:	WB 1:500-1:2000, IHC 1:50-1:200
Reactivity:	Human,Mouse,Rat
Purification:	The Ab is from purified rabbit serum by affinity purification via sequential chromatography on phospho- and non-phospho-peptide affinity columns.
Specificity:	Phospho-Adrenergic Receptor beta2 (Thr68) Ab detects endogenous levels of Adrenergic Receptor beta2 only when phosphorylated at Thr68
Immunogen:	A synthesized peptide derived from human Adrenergic Receptor beta2 around the phosphorylation site of Thr68
Uniprot:	P07550
Subcellular Location:	Cell membrane.
Similarity:	Belongs to the G-protein coupled receptor 1 family. Adrenergic receptor subfamily. ADRB2 sub-subfamily.
Storage Condition and Buffer:	Rabbit IgG in phosphate buffered saline , pH 7.4, 150mM NaCl, 0.02% sodium azide and 50% glycerol.Store at -20 °C.Stable for 12 months from date of receipt



Western blot analysis of Phospho-Adrenergic Receptor beta2 (Thr68) in lysates of HuvEc serum 20% 15', using Phospho-Adrenergic Receptor beta2 (Thr68) Ab(AF7205).



AF7205 at 1/100 staining human kidney tissue sections by IHC-P. The tissue was formaldehyde fixed and a heat mediated antigen retrieval step in citrate buffer was performed. The tissue was then blocked and incubated with the Ab for 1.5 hours at 22°C. An HRP conjugated goat anti-rabbit Ab was used as the secondary.

**IMPORTANT:** For western blot, incubate membrane with diluted Ab in 5% w/v milk , 1X TBS, 0.1% Tween@20 at 4°C with gentle shaking, overnight.

For Research Use Only. Not for use in diagnostic and therapeutic procedures. Not for resale without express authorization.