

Phospho-VEGFR1 (Ser1048) Ab

Cat.#: AF7248	Concn.: 1mg/ml	Mol.Wt.: 100kDa
Size: 50ul,100ul,200ul	Source: Rabbit	Clonality: Polyclonal

Application: WB 1:500-1:2000, IHC 1:50-1:200

Reactivity: Human,Mouse,Rat

Purification: The Ab is from purified rabbit serum by affinity purification via sequential chromatography on phospho- and non-phospho-peptide affinity columns.

Specificity: Phospho-VEGFR1 (Ser1048) Ab detects endogenous levels of VEGFR1 only when phosphorylated at Ser1048

Immunogen: A synthesized peptide derived from human VEGFR1 around the phosphorylation site of Ser1048

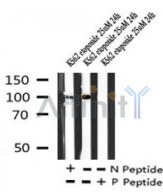
Uniprot: P17948

Subcellular Location: Secreted and Cell membrane.

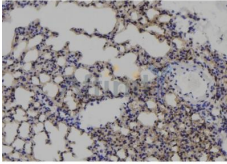
Tissue Specificity: Detected in normal lung, but also in placenta, liver, kidney, heart and brain tissues. Specifically expressed in most of the vascular endothelial cells, and also expressed in peripheral blood monocytes. Isoform 2 is strongly expressed in placenta. Isoform 3 is expressed in corneal epithelial cells (at protein level). Isoform 3 is expressed in vascular smooth muscle cells (VSMC).

Similarity: The second and third Ig-like C2-type (immunoglobulin-like) domains are sufficient for VEGFA binding.Belongs to the protein kinase superfamily. Tyr protein kinase family. CSF-1/PDGF receptor subfamily.

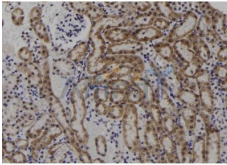
Storage Condition and Buffer: Rabbit IgG in phosphate buffered saline , pH 7.4, 150mM NaCl, 0.02% sodium azide and 50% glycerol.Store at -20 °C.Stable for 12 months from date of receipt



Western blot analysis of Phospho-VEGFR1 (Ser1048) in lysates of K562 etoposide 25uM 24h, using Phospho-VEGFR1 (Ser1048) Ab(AF7248).



AF7248 at 1/100 staining mouse lung tissue sections by IHC-P. The tissue was formaldehyde fixed and a heat mediated antigen retrieval step in citrate buffer was performed. The tissue was then blocked and incubated with the Ab for 1.5 hours at 22°C. An HRP conjugated goat anti-rabbit Ab was used as the secondary.



AF7248 at 1/100 staining rat kidney tissue sections by IHC-P. The tissue was formaldehyde fixed and a heat mediated antigen retrieval step in citrate buffer was performed. The tissue was then blocked and incubated with the Ab for 1.5 hours at 22°C. An HRP conjugated goat anti-rabbit Ab was used as the secondary.

IMPORTANT: For western blot, incubate membrane with diluted Ab in 5% w/v milk , 1X TBS, 0.1% Tween@20 at 4°C with gentle shaking, overnight.

For Research Use Only. Not for use in diagnostic and therapeutic procedures. Not for resale without express authorization.