

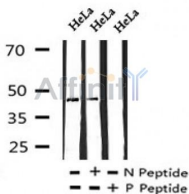
Phospho-BCL-3 (Ser41) Ab

Cat.#: AF7256
Size: 50ul,100ul,200ul

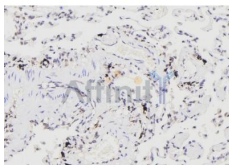
Concn.: 1mg/ml
Source: Rabbit

Mol.Wt.: 47584
Clonality: Polyclonal

| | |
|-------------------------------|---|
| Application: | WB 1:500-1:2000, IHC 1:50-1:200 |
| Reactivity: | Mouse,Human |
| Purification: | The Ab is from purified rabbit serum by affinity purification via sequential chromatography on phospho- and non-phospho-peptide affinity columns. |
| Specificity: | Phospho-BCL-3 (Ser41) Ab detects endogenous levels of BCL-3 only when phosphorylated at Ser41 |
| Immunogen: | A synthesized peptide derived from human BCL-3 around the phosphorylation site of Ser41 |
| Uniprot: | P20749 |
| Subcellular Location: | Nucleus. Cytoplasm. Cytoplasm > perinuclear region. Ubiquitination via 'Lys-63'-linked ubiquitin chains is required for nuclear accumulation. |
| Storage Condition and Buffer: | Rabbit IgG in phosphate buffered saline , pH 7.4, 150mM NaCl, 0.02% sodium azide and 50% glycerol.Store at -20 °C.Stable for 12 months from date of receipt |



Western blot analysis of Phospho-BCL-3 (Ser41) in lysates of HeLa , using Phospho-BCL-3 (Ser41) Ab(AF7256).



AF7256 at 1/100 staining human lung cancer tissue sections by IHC-P. The tissue was formaldehyde fixed and a heat mediated antigen retrieval step in citrate buffer was performed. The tissue was then blocked and incubated with the Ab for 1.5 hours at 22°C. An HRP conjugated goat anti-rabbit Ab was used as the secondary.

IMPORTANT: For western blot, incubate membrane with diluted Ab in 5% w/v milk , 1X TBS, 0.1% Tween@20 at 4°C with gentle shaking, overnight.



Affinity Biosciences

website:www.affbiotech.com

order:order@affbiotech.com

For Research Use Only. Not for use in diagnostic and therapeutic procedures. Not for resale without express authorization.