

Phospho-CDK9 (Ser347) Ab

Cat.#: AF7316	Concn.: 1mg/ml	Mol.Wt.: 43kDa
Size: 50ul,100ul,200ul	Source: Rabbit	Clonality: Polyclonal

Application: WB 1:500-1:2000, IHC 1:50-1:200

Reactivity: Human,Mouse,Rat

Purification: The Ab is from purified rabbit serum by affinity purification via sequential chromatography on phospho- and non-phospho-peptide affinity columns.

Specificity: Phospho-CDK9 (Ser347) Ab detects endogenous levels of CDK9 only when phosphorylated at Ser347

Immunogen: A synthesized peptide derived from human CDK9 around the phosphorylation site of Ser347

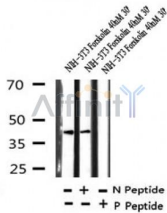
Uniprot: P50750

Subcellular Location: Nucleus.

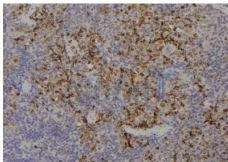
Tissue Specificity: Ubiquitous.

Similarity: Belongs to the protein kinase superfamily. CMGC Ser/Thr protein kinase family. CDC2/CDKX subfamily.

Storage Condition and Buffer: Rabbit IgG in phosphate buffered saline , pH 7.4, 150mM NaCl, 0.02% sodium azide and 50% glycerol.Store at -20 °C.Stable for 12 months from date of receipt



Western blot analysis of Phospho-CDK9 (Ser347) in lysates of NIH-3T3 Forskolin 40nM 30', using Phospho-CDK9 (Ser347) Ab(AF7316).



AF7316 at 1/100 staining mouse spleen tissue sections by IHC-P. The tissue was formaldehyde fixed and a heat mediated antigen retrieval step in citrate buffer was performed. The tissue was then blocked and incubated with the Ab for 1.5 hours at 22°C. An HRP conjugated goat anti-rabbit Ab was used as the secondary.

IMPORTANT: For western blot, incubate membrane with diluted Ab in 5% w/v milk, 1X TBS, 0.1% Tween@20 at 4°C with gentle shaking, overnight.

For Research Use Only. Not for use in diagnostic and therapeutic procedures. Not for resale without express authorization.