

Phospho-Prdx1 (Ser196) Ab

| | | |
|------------------------|----------------|-----------------------|
| Cat.#: AF7358 | Concn.: 1mg/ml | Mol.Wt.: 22kDa |
| Size: 50ul,100ul,200ul | Source: Rabbit | Clonality: Polyclonal |

Application: WB 1:500-1:2000, IHC 1:50-1:200

Reactivity: Rat,Human,Mouse

Purification: The Ab is from purified rabbit serum by affinity purification via sequential chromatography on phospho- and non-phospho-peptide affinity columns.

Specificity: Phospho-Prdx1 (Ser196) Ab detects endogenous levels of Prdx1 only when phosphorylated at Ser196

Immunogen: A synthesized peptide derived from human Prdx1 around the phosphorylation site of Ser196

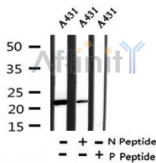
Uniprot: Q06830

Subcellular Location: Cytoplasm. Melanosome. Identified by mass spectrometry in melanosome fractions from stage I to stage IV.

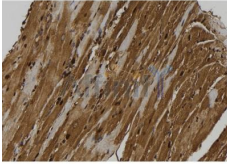
Tissue Specificity: Constitutively expressed in most human cells; is induced to higher levels upon serum stimulation in untransformed and transformed cells.

Similarity: Belongs to the peroxiredoxin family. AhpC/Prx1 subfamily.

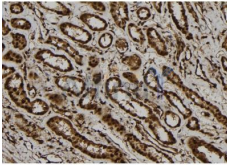
Storage Condition and Buffer: Rabbit IgG in phosphate buffered saline , pH 7.4, 150mM NaCl, 0.02% sodium azide and 50% glycerol.Store at -20 °C.Stable for 12 months from date of receipt



Western blot analysis of Phospho-Prdx1 (Ser196) in lysates of A431, using Phospho-Prdx1 (Ser196) Ab(AF7358).



AF7358 at 1/100 staining mouse heart tissue sections by IHC-P. The tissue was formaldehyde fixed and a heat mediated antigen retrieval step in citrate buffer was performed. The tissue was then blocked and incubated with the Ab for 1.5 hours at 22°C. An HRP conjugated goat anti-rabbit Ab was used as the secondary.



AF7358 at 1/100 staining human kidney tissue sections by IHC-P. The tissue was formaldehyde fixed and a heat mediated antigen retrieval step in citrate buffer was performed. The tissue was then blocked and incubated with the Ab for 1.5 hours at 22°C. An HRP conjugated goat anti-rabbit Ab was used as the secondary.

IMPORTANT: For western blot, incubate membrane with diluted Ab in 5% w/v milk , 1X TBS, 0.1% Tween@20 at 4°C with gentle shaking, overnight.

For Research Use Only. Not for use in diagnostic and therapeutic procedures. Not for resale without express authorization.