

## PDGFR $\alpha$ (Phospho-Tyr762) Ab

Cat.#: AF8053	Concn.: 1mg/ml	Mol.Wt.: 140kDa
Size: 50ul,100ul,200ul	Source: Rabbit	Clonality: Polyclonal

**Application:** WB 1:1000-3000, IHC 1:50-1:200

**Reactivity:** Human,Mouse,Rat

**Purification:** The Ab is from purified rabbit serum by affinity purification via sequential chromatography on phospho- and non-phospho-peptide affinity columns.

**Specificity:** PDGFR  $\alpha$  (Phospho-Tyr762) Ab detects endogenous levels of PDGFR  $\alpha$  only when phosphorylated at Tyr762

**Immunogen:** A synthesized peptide derived from human PDGFR  $\alpha$  (Phospho-Tyr762)

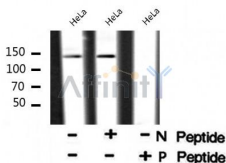
**Uniprot:** P16234

**Subcellular Location:** Membrane.

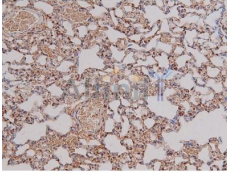
**Tissue Specificity:** Detected in platelets (at protein level). Widely expressed. Detected in brain, fibroblasts, smooth muscle, heart, and embryo. Expressed in primary and metastatic colon tumors and in normal colon tissue.

**Similarity:** Belongs to the protein kinase superfamily. Tyr protein kinase family. CSF-1/PDGF receptor subfamily.

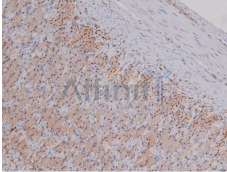
**Storage Condition and Buffer:** Rabbit IgG in phosphate buffered saline , pH 7.4, 150mM NaCl, 0.02% sodium azide and 50% glycerol.Store at -20 °C.Stable for 12 months from date of receipt



Western blot analysis PDGFR  $\alpha$  (Phospho-Tyr762) using HeLa whole cell lysates



AF8053 at 1/200 staining Mouse lung tissue sections by IHC-P. The tissue was formaldehyde fixed and a heat mediated antigen retrieval step in citrate buffer was performed. The tissue was then blocked and incubated with the Ab for 1.5 hours at 22°C. An HRP conjugated goat anti-rabbit Ab was used as the secondary.



AF8053 at 1/200 staining Rat ganstric tissue sections by IHC-P. The tissue was formaldehyde fixed and a heat mediated antigen retrieval step in citrate buffer was performed. The tissue was then blocked and incubated with the Ab for 1.5 hours at 22°C. An HRP conjugated goat anti-rabbit Ab was used as the secondary.

**IMPORTANT:** For western blot, incubate membrane with diluted Ab in 5% w/v milk , 1X TBS, 0.1% Tween@20 at 4°C with gentle shaking, overnight.

For Research Use Only. Not for use in diagnostic and therapeutic procedures. Not for resale without express authorization.