

## TGF $\beta$ Receptor I (Phospho-Ser165) Ab

Cat.#: AF8080	Concn.: 1mg/ml	Mol.Wt.: 56 kDa.
Size: 50ul,100ul,200ul	Source: Rabbit	Clonality: Polyclonal

**Application:** WB 1:1000-3000

**Reactivity:** Human,Mouse,Rat

**Purification:** The Ab is from purified rabbit serum by affinity purification via sequential chromatography on phospho- and non-phospho-peptide affinity columns.

**Specificity:** TGF  $\beta$  Receptor I (Phospho-Ser165) Ab detects endogenous levels of TGF  $\beta$  Receptor I only when phosphorylated at TSer165

**Immunogen:** A synthesized peptide derived from human TGF  $\beta$  Receptor I (Phospho-Ser165)

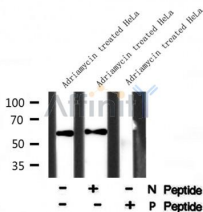
**Uniprot:** P36897

**Subcellular Location:** Membrane.

**Tissue Specificity:** Found in all tissues examined, most abundant in placenta and least abundant in brain and heart. Expressed in a variety of cancer cell lines (PubMed:25893292).

**Similarity:** Belongs to the protein kinase superfamily. TKL Ser/Thr protein kinase family. TGFB receptor subfamily.

**Storage Condition and Buffer:** Rabbit IgG in phosphate buffered saline , pH 7.4, 150mM NaCl, 0.02% sodium azide and 50% glycerol.Store at -20 °C.Stable for 12 months from date of receipt



Western blot analysis TGF  $\beta$  Receptor I (Phospho-Ser165) using Adriamycin treated HeLa whole cell lysates

**IMPORTANT:** For western blot, incubate membrane with diluted Ab in 5% w/v milk , 1X TBS, 0.1% Tween@20 at 4°C with gentle shaking, overnight.