

Presenilin 2 (Phospho-Ser330) Ab

Cat.#: AF8093	Concn.: 1mg/ml	Mol.Wt.: 50kDa
Size: 50ul,100ul,200ul	Source: Rabbit	Clonality: Polyclonal

Application: WB 1:1000-3000

Reactivity: Human,Mouse,Rat

Purification: The Ab is from purified rabbit serum by affinity purification via sequential chromatography on phospho- and non-phospho-peptide affinity columns.

Specificity: Presenilin 2 (Phospho-Ser330) Ab detects endogenous levels of Presenilin 2 only when phosphorylated at Ser330

Immunogen: A synthesized peptide derived from human Presenilin 2 (Phospho-Ser330)

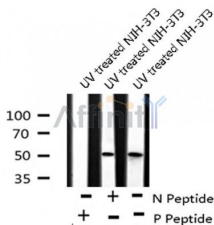
Uniprot: P49810

Subcellular Location: Endoplasmic reticulum membrane. Golgi apparatus membrane.

Tissue Specificity: Isoform 1 is seen in the placenta, skeletal muscle and heart while isoform 2 is seen in the heart, brain, placenta, liver, skeletal muscle and kidney.

Similarity: The PAL motif is required for normal active site conformation.Belongs to the peptidase A22A family.

Storage Condition and Buffer: Rabbit IgG in phosphate buffered saline , pH 7.4, 150mM NaCl, 0.02% sodium azide and 50% glycerol.Store at -20 °C.Stable for 12 months from date of receipt



Western blot analysis Presenilin 2 (Phospho-Ser330) using UV treated NIH-3T3 whole cell lysates

IMPORTANT: For western blot, incubate membrane with diluted Ab in 5% w/v milk , 1X TBS, 0.1% Tween@20 at 4°C with gentle shaking, overnight.