

TIE1 (Phospho-Tyr1117) Ab

Cat.#: AF8192	Concn.: 1mg/ml	Mol.Wt.: 130 KD
Size: 50ul,100ul,200ul	Source: Rabbit	Clonality: Polyclonal

Application: WB 1:1000-3000

Reactivity: Human,Mouse,Rat

Purification: The Ab is from purified rabbit serum by affinity purification via sequential chromatography on phospho- and non-phospho-peptide affinity columns.

Specificity: TIE1 (Phospho-Tyr1117) Ab detects endogenous levels of TIE1 only when phosphorylated at Tyr1117

Immunogen: A synthesized peptide derived from human TIE1 (Phospho-Tyr1117)

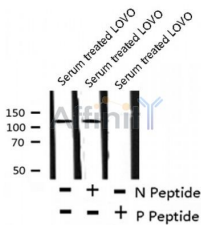
Uniprot: P35590

Subcellular Location: Cell membrane.

Tissue Specificity: Specifically expressed in developing vascular endothelial cells.

Similarity: Belongs to the protein kinase superfamily. Tyr protein kinase family. Tie subfamily.

Storage Condition and Buffer: Rabbit IgG in phosphate buffered saline , pH 7.4, 150mM NaCl, 0.02% sodium azide and 50% glycerol.Store at -20 °C.Stable for 12 months from date of receipt



Western blot analysis TIE1 (Phospho-Tyr1117) using Serum treated LOVO whole cell lysates

IMPORTANT: For western blot, incubate membrane with diluted Ab in 5% w/v milk , 1X TBS, 0.1% Tween@20 at 4°C with gentle shaking, overnight.

For Research Use Only. Not for use in diagnostic and therapeutic procedures. Not for resale without express authorization.