

TRF2 (Phospho-Thr188) Ab

Cat.#: AF8209
Size: 50ul,100ul,200ul

Concn.: 1mg/ml
Source: Rabbit

Mol.Wt.: 60kDa
Clonality: Polyclonal

Application: WB 1:1000-3000

Reactivity: Human,Mouse,Rat

Purification: The Ab is from purified rabbit serum by affinity purification via sequential chromatography on phospho- and non-phospho-peptide affinity columns.

Specificity: TRF2 (Phospho-Thr188) Ab detects endogenous levels of TRF2 only when phosphorylated at Thr188

Immunogen: A synthesized peptide derived from human TRF2 (Phospho-Thr188)

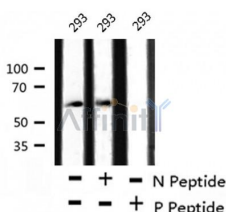
Uniprot: Q15554

Subcellular Location: Nucleus. Chromosome > telomere. Colocalizes with telomeric DNA in interphase cells and is located at chromosome ends during metaphase.

Tissue Specificity: Ubiquitous. Highly expressed in spleen, thymus, prostate, uterus, testis, small intestine, colon and peripheral blood leukocytes.

Similarity: The TRFH dimerization region mediates the interaction with DCLRE1B/Apollo but not TINF2.The HTH domain is an independent structural unit and mediates binding to telomeric DNA.

Storage Condition and Buffer: Rabbit IgG in phosphate buffered saline , pH 7.4, 150mM NaCl, 0.02% sodium azide and 50% glycerol.Store at -20 °C.Stable for 12 months from date of receipt



Western blot analysis TRF2 (Phospho-Thr188) using 293 whole cell lysates

IMPORTANT: For western blot, incubate membrane with diluted Ab in 5% w/v milk , 1X TBS, 0.1% Tween@20 at 4°C with gentle shaking, overnight.



Affinity Biosciences

website:www.affbiotech.com

order:order@affbiotech.com

For Research Use Only. Not for use in diagnostic and therapeutic procedures. Not for resale without express authorization.