

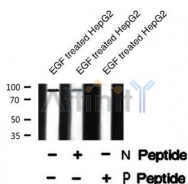
PDE4D (Phospho-Ser578) Ab

Cat.#: AF8298
Size: 50ul,100ul,200ul

Concn.: 1mg/ml
Source: Rabbit

Mol.Wt.: 91kDa
Clonality: Polyclonal

Application:	WB 1:1000-3000
Reactivity:	Human,Mouse,Rat
Purification:	The Ab is from purified rabbit serum by affinity purification via sequential chromatography on phospho- and non-phospho-peptide affinity columns.
Specificity:	PDE4D (Phospho-Ser578) Ab detects endogenous levels of PDE4D only when phosphorylated at Ser578
Immunogen:	A synthesized peptide derived from human PDE4D (Phospho-Ser578)
Uniprot:	Q08499
Subcellular Location:	Cytoplasm. Membrane. Cytoplasm > cytoskeleton. Cytoplasm > cytoskeleton > centrosome. Found in the soluble fraction, associated with membranes, and associated with the cytoskeleton and the centrosome.
Tissue Specificity:	Expressed in colonic epithelial cells (at protein level). Widespread; most abundant in skeletal muscle. Isoform 6 is detected in brain. Isoform 8 is detected in brain, placenta, lung and kidney. Isoform 7 is detected in heart and skeletal muscle.
Similarity:	Belongs to the cyclic nucleotide phosphodiesterase family. PDE4 subfamily.
Storage Condition and Buffer:	Rabbit IgG in phosphate buffered saline , pH 7.4, 150mM NaCl, 0.02% sodium azide and 50% glycerol.Store at -20 °C.Stable for 12 months from date of receipt



Western blot analysis PDE4D (Phospho-Ser578) using EGF treated HepG2 whole cell lysates



Affinity Biosciences

website: www.affbiotech.com

order: order@affbiotech.com

w/v milk , 1X TBS, 0.1% Tween@20 at 4°C with gentle shaking, overnight.

For Research Use Only. Not for use in diagnostic and therapeutic procedures. Not for resale without express authorization.