

## PDX1 (Phospho-Ser61) Ab

Cat.#: AF8300	Concn.: 1mg/ml	Mol.Wt.: 31kDa
Size: 50ul,100ul,200ul	Source: Rabbit	Clonality: Polyclonal

**Application:** WB 1:1000-3000

**Reactivity:** Human

**Purification:** The Ab is from purified rabbit serum by affinity purification via sequential chromatography on phospho- and non-phospho-peptide affinity columns.

**Specificity:** PDX1 (Phospho-Ser61) Ab detects endogenous levels of PDX1 only when phosphorylated at Ser61

**Immunogen:** A synthesized peptide derived from human PDX1 (Phospho-Ser61)

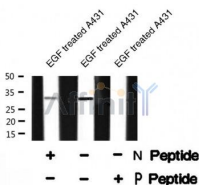
**Uniprot:** P52945

**Subcellular Location:** Nucleus.

**Tissue Specificity:** Duodenum and pancreas (Langerhans islet beta cells and small subsets of endocrine non-beta-cells, at low levels in acinar cells).

**Similarity:** The Antp-type hexapeptide mediates heterodimerization with PBX on a regulatory element of the somatostatin promoter. The homeodomain, which contains the nuclear localization signal, not only mediates DNA-binding, but also acts as a protein-protein interaction domain for TCF3(E47), NEUROD1 and HMG-I(Y). Belongs to the Antp homeobox family. IPF1/XIHXbox-8 subfamily.

**Storage Condition and Buffer:** Rabbit IgG in phosphate buffered saline , pH 7.4, 150mM NaCl, 0.02% sodium azide and 50% glycerol. Store at -20 °C. Stable for 12 months from date of receipt



Western blot analysis PDX1 (Phospho-Ser61) using EGF treated A431 whole cell lysates



**Affinity Biosciences**

website: [www.affbiotech.com](http://www.affbiotech.com)

order: [order@affbiotech.com](mailto:order@affbiotech.com)

---

w/v milk , 1X TBS, 0.1% Tween@20 at 4°C with gentle shaking, overnight.

For Research Use Only. Not for use in diagnostic and therapeutic procedures. Not for resale without express authorization.