

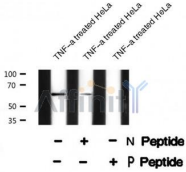
PSEN1 (Phospho-Ser353) Ab

Cat.#: AF8304
Size: 50ul,100ul,200ul

Concn.: 1mg/ml
Source: Rabbit

Mol.Wt.: 60kDa
Clonality: Polyclonal

| | |
|-------------------------------|--|
| Application: | WB 1:1000-3000, IF/ICC 1:100-1:500 |
| Reactivity: | Human,Mouse,Rat |
| Purification: | The Ab is from purified rabbit serum by affinity purification via sequential chromatography on phospho- and non-phospho-peptide affinity columns. |
| Specificity: | PSEN1 (Phospho-Ser353) Ab detects endogenous levels of PSEN1 only when phosphorylated at Ser353 |
| Immunogen: | A synthesized peptide derived from human PSEN1 (Phospho-Ser353) |
| Uniprot: | P49768 |
| Subcellular Location: | Endoplasmic reticulum membrane. Golgi apparatus membrane. Cell surface. Bound to NOTCH1 also at the cell surface. Colocalizes with CDH1/2 at sites of cell-cell contact. Colocalizes with CTNNB1 in the endoplasmic reticulum and the proximity of the plasma membrane. Also present in azurophil granules of neutrophils. |
| Tissue Specificity: | Detected in azurophile granules in neutrophils and in platelet cytoplasmic granules (at protein level) (PubMed:11987239). Expressed in a wide range of tissues including various regions of the brain, liver, spleen and lymph nodes (PubMed:7596406, PubMed:8641442, PubMed:8574969). |
| Similarity: | The PAL motif is required for normal active site conformation.Belongs to the peptidase A22A family. |
| Storage Condition and Buffer: | Rabbit IgG in phosphate buffered saline , pH 7.4, 150mM NaCl, 0.02% sodium azide and 50% glycerol.Store at -20 °C.Stable for 12 months from date of receipt |



Western blot analysis PSEN1 (Phospho-Ser353) using TNF- α treated HeLa whole cell lysates



AF8304 staining RAW264.7 by IF/ICC. The sample were fixed with PFA and permeabilized in 0.1% Triton X-100, then blocked in 10% serum for 45 minutes at 25°C. The primary Ab was diluted at 1/200 and incubated with the sample for 1 hour at 37°C. An Alexa Fluor 594 conjugated goat anti-rabbit IgG (H+L) Ab, diluted at 1/600, was used as the secondary Ab.

IMPORTANT: For western blot, incubate membrane with diluted Ab in 5% w/v milk, 1X TBS, 0.1% Tween@20 at 4°C with gentle shaking, overnight.

For Research Use Only. Not for use in diagnostic and therapeutic procedures. Not for resale without express authorization.