

PTP1B (Phospho-Tyr66) Ab

Cat.#: AF8305	Concn.: 1mg/ml	Mol.Wt.: 49kDa
Size: 50ul,100ul,200ul	Source: Rabbit	Clonality: Polyclonal

Application: WB 1:1000-3000, IF/ICC 1:100-1:500

Reactivity: Human,Mouse,Rat

Purification: The Ab is from purified rabbit serum by affinity purification via sequential chromatography on phospho- and non-phospho-peptide affinity columns.

Specificity: PTP1B (Phospho-Tyr66) Ab detects endogenous levels of PTP1B only when phosphorylated at Tyr66

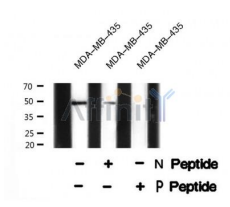
Immunogen: A synthesized peptide derived from human PTP1B (Phospho-Tyr66)

Uniprot: P18031

Subcellular Location: Endoplasmic reticulum membrane.

Similarity: Belongs to the protein-tyrosine phosphatase family. Non-receptor class 1 subfamily.

Storage Condition and Buffer: Rabbit IgG in phosphate buffered saline , pH 7.4, 150mM NaCl, 0.02% sodium azide and 50% glycerol.Store at -20 °C.Stable for 12 months from date of receipt



Western blot analysis PTP1B (Phospho-Tyr66) using MDA-MB-435 whole cell lysates



AF8305 staining HeLa by IF/ICC. The sample were fixed with PFA and permeabilized in 0.1% Triton X-100,then blocked in 10% serum for 45 minutes at 25°C. The primary Ab was diluted at 1/200 and incubated with the sample for 1 hour at 37°C. An Alexa Fluor 594 conjugated goat anti-rabbit IgG (H+L) Ab, diluted at 1/600, was used as the secondary Ab.

IMPORTANT: For western blot, incubate membrane with diluted Ab in 5%



Affinity Biosciences

website: www.affbiotech.com

order: order@affbiotech.com

w/v milk , 1X TBS, 0.1% Tween@20 at 4°C with gentle shaking, overnight.

For Research Use Only. Not for use in diagnostic and therapeutic procedures. Not for resale without express authorization.