

## USF1 (Phospho-Thr153) Ab

Cat.#: AF8331  
 Size: 50ul,100ul,200ul

Concn.: 1mg/ml  
 Source: Rabbit

Mol.Wt.: 34kDa  
 Clonality: Polyclonal

Application: WB 1:1000-3000

Reactivity: Human,Mouse,Rat

Purification: The Ab is from purified rabbit serum by affinity purification via sequential chromatography on phospho- and non-phospho-peptide affinity columns.

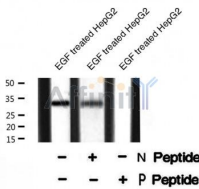
Specificity: USF1 (Phospho-Thr153) Ab detects endogenous levels of USF1 only when phosphorylated at Thr153

Immunogen: A synthesized peptide derived from human USF1 (Phospho-Thr153)

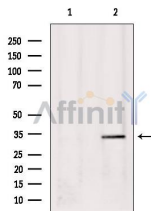
Uniprot: P22415

Subcellular Location: Nuclear

Storage Condition and Buffer: Rabbit IgG in phosphate buffered saline , pH 7.4, 150mM NaCl, 0.02% sodium azide and 50% glycerol.Store at -20 °C.Stable for 12 months from date of receipt



Western blot analysis USF1 (Phospho-Thr153) using EGF treated HepG2 whole cell lysates



Western blot analysis of extracts from HepG2, using USF1 (Phospho-Thr153) Ab. Lane 1 was treated with the blocking peptide.

**IMPORTANT:** For western blot, incubate membrane with diluted Ab in 5% w/v milk , 1X TBS, 0.1% Tween@20 at 4°C with gentle shaking, overnight.



**Affinity Biosciences**  
website: [www.affbiotech.com](http://www.affbiotech.com)  
order: [order@affbiotech.com](mailto:order@affbiotech.com)

---

procedures. Not for resale without express authorization.