

## PRK1/2 (Phospho-Thr774/816) Ab

Cat.#: AF8349	Concn.: 1mg/ml	Mol.Wt.: 104KD
Size: 50ul,100ul,200ul	Source: Rabbit	Clonality: Polyclonal

**Application:** WB 1:1000-3000

**Reactivity:** Human

**Purification:** The Ab is from purified rabbit serum by affinity purification via sequential chromatography on phospho- and non-phospho-peptide affinity columns.

**Specificity:** PRK1/2 (Phospho-Thr774/816) Ab detects endogenous levels of PRK1/2 only when phosphorylated at Thr774/816

**Immunogen:** A synthesized peptide derived from human PRK1/2 (Phospho-Thr774/816)

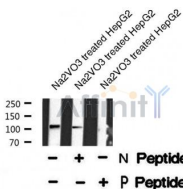
**Uniprot:** Q16512/Q16513

**Subcellular Location:** Cytoplasm. Nucleus. Endosome. Cell membrane. Cleavage furrow. Midbody. Associates with chromatin in a ligand-dependent manner. Localization to endosomes is mediated via its interaction with RHOB. Association to the cell membrane is dependent on Ser-374 phosphorylation. Accumulates during telophase at the cleavage furrow and finally concentrates around the midbody in cytokinesis.

**Tissue Specificity:** Found ubiquitously. Expressed in heart, brain, placenta, lung, skeletal muscle, kidney and pancreas. Expressed in numerous tumor cell lines, especially in breast tumor cells.

**Similarity:** The C1 domain does not bind the diacylglycerol (DAG).Belongs to the protein kinase superfamily. AGC Ser/Thr protein kinase family. PKC subfamily.

**Storage Condition and Buffer:** Rabbit IgG in phosphate buffered saline , pH 7.4, 150mM NaCl, 0.02% sodium azide and 50% glycerol.Store at -20 °C.Stable for 12 months from date of receipt



Western blot analysis PRK1/2 (Phospho-Thr774/816) using Na<sub>2</sub>VO<sub>3</sub> treated HepG2 whole cell lysates

**IMPORTANT:** For western blot, incubate membrane with diluted Ab in 5% w/v milk, 1X TBS, 0.1% Tween@20 at 4°C with gentle shaking, overnight.

For Research Use Only. Not for use in diagnostic and therapeutic procedures. Not for resale without express authorization.