

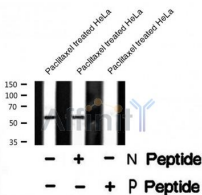
ABI1 (Phospho-Tyr212) Ab

Cat.#: AF8358
 Size: 50ul,100ul,200ul

Concn.: 1mg/ml
 Source: Rabbit

Mol.Wt.: 55 kDa
 Clonality: Polyclonal

Application:	WB 1:1000-3000
Reactivity:	Human,Mouse,Rat
Purification:	The Ab is from purified rabbit serum by affinity purification via sequential chromatography on phospho- and non-phospho-peptide affinity columns.
Specificity:	ABI1 (Phospho-Tyr212) Ab detects endogenous levels of ABI1 only when phosphorylated at Tyr212
Immunogen:	A synthesized peptide derived from human ABI1 (Phospho-Tyr212)
Uniprot:	Q8IZP0
Subcellular Location:	Cytoplasm. Nucleus. Cell projection > lamellipodium. Cell projection > filopodium. Cell projection > growth cone. Cell junction > synapse > synaptosome. Cytoplasm > cytoskeleton. Localized to protruding lamellipodia and filopodia tips. Also localized to neuronal growth cones and synaptosomes.
Tissue Specificity:	Widely expressed, with highest expression in brain.
Similarity:	The t-SNARE coiled-coil homology domain is necessary and sufficient for interaction with STX1A.Belongs to the ABI family.
Storage Condition and Buffer:	Rabbit IgG in phosphate buffered saline , pH 7.4, 150mM NaCl, 0.02% sodium azide and 50% glycerol.Store at -20 °C.Stable for 12 months from date of receipt



Western blot analysis ABI1 (Phospho-Tyr212) using Paclitaxel treated HeLa whole cell lysates

IMPORTANT: For western blot, incubate membrane with diluted Ab in 5% w/v milk , 1X TBS, 0.1% Tween@20 at 4°C with gentle shaking, overnight.



Affinity Biosciences

website: www.affbiotech.com

order: order@affbiotech.com

For Research Use Only. Not for use in diagnostic and therapeutic procedures. Not for resale without express authorization.