

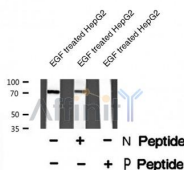
## PRC1 (Phospho-Thr470) Ab

Cat.#: AF8393  
 Size: 50ul,100ul,200ul

Concn.: 1mg/ml  
 Source: Rabbit

Mol.Wt.: 72kDa  
 Clonality: Polyclonal

Application:	WB 1:1000-3000
Reactivity:	Human,Mouse
Purification:	The Ab is from purified rabbit serum by affinity purification via sequential chromatography on phospho- and non-phospho-peptide affinity columns.
Specificity:	PRC1 (Phospho-Thr470) Ab detects endogenous levels of PRC1 only when phosphorylated at Thr470
Immunogen:	A synthesized peptide derived from human PRC1 (Phospho-Thr470)
Uniprot:	O43663
Subcellular Location:	Nucleus. Cytoplasm. Cytoplasm > cytoskeleton > spindle pole. Predominantly localized to the nucleus of interphase cells. During mitosis becomes associated with the mitotic spindle poles and localizes with the cell midbody during cytokinesis.
Tissue Specificity:	Overexpressed in bladder cancer cells (PubMed:17409436).
Similarity:	Microtubule binding occurs via a basic patch in the central spectrin-like domain and requires also the unstructured C-terminal domain.Belongs to the MAP65/ASE1 family.
Storage Condition and Buffer:	Rabbit IgG in phosphate buffered saline , pH 7.4, 150mM NaCl, 0.02% sodium azide and 50% glycerol.Store at -20 °C.Stable for 12 months from date of receipt



Western blot analysis PRC1 (Phospho-Thr470) using EGF treated HepG2 whole cell lysates

**IMPORTANT:** For western blot, incubate membrane with diluted Ab in 5% w/v milk , 1X TBS, 0.1% Tween@20 at 4°C with gentle shaking, overnight.



**Affinity Biosciences**

website:[www.affbiotech.com](http://www.affbiotech.com)

order:[order@affbiotech.com](mailto:order@affbiotech.com)

---

For Research Use Only. Not for use in diagnostic and therapeutic procedures. Not for resale without express authorization.