

PRC1 (Phospho-Thr481) Ab

Cat.#: AF8394	Concn.: 1mg/ml	Mol.Wt.: 72kDa
Size: 50ul,100ul,200ul	Source: Rabbit	Clonality: Polyclonal

Application: WB 1:1000-3000

Reactivity: Human

Purification: The Ab is from purified rabbit serum by affinity purification via sequential chromatography on phospho- and non-phospho-peptide affinity columns.

Specificity: PRC1 (Phospho-Thr481) Ab detects endogenous levels of PRC1 only when phosphorylated at Thr481

Immunogen: A synthesized peptide derived from human PRC1 (Phospho-Thr481)

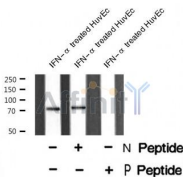
Uniprot: O43663

Subcellular Location: Nucleus. Cytoplasm. Cytoplasm > cytoskeleton > spindle pole. Predominantly localized to the nucleus of interphase cells. During mitosis becomes associated with the mitotic spindle poles and localizes with the cell midbody during cytokinesis.

Tissue Specificity: Overexpressed in bladder cancer cells (PubMed:17409436).

Similarity: Microtubule binding occurs via a basic patch in the central spectrin-like domain and requires also the unstructured C-terminal domain.Belongs to the MAP65/ASE1 family.

Storage Condition and Buffer: Rabbit IgG in phosphate buffered saline , pH 7.4, 150mM NaCl, 0.02% sodium azide and 50% glycerol.Store at -20 °C.Stable for 12 months from date of receipt



Western blot analysis PRC1 (Phospho-Thr481) using IFN-α treated HuvEc whole cell lysates

IMPORTANT: For western blot, incubate membrane with diluted Ab in 5% w/v milk , 1X TBS, 0.1% Tween@20 at 4°C with gentle shaking, overnight.



Affinity Biosciences

website: www.affbiotech.com

order: order@affbiotech.com

For Research Use Only. Not for use in diagnostic and therapeutic procedures. Not for resale without express authorization.