

PRKCB1 (Phospho-Thr500) Ab

Cat.#: AF8397 Concn.: 1mg/ml Mol.Wt.: 77kDa
 Size: 50ul,100ul,200ul Source: Rabbit Clonality: Polyclonal

Application: WB 1:1000-3000, IF/ICC 1:100-1:500

Reactivity: Human,Mouse,Rat

Purification: The Ab is from purified rabbit serum by affinity purification via sequential chromatography on phospho- and non-phospho-peptide affinity columns.

Specificity: PRKCB1 (Phospho-Thr500) Ab detects endogenous levels of PRKCB1 only when phosphorylated at Thr500

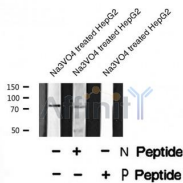
Immunogen: A synthesized peptide derived from human PRKCB1 (Phospho-Thr500)

Uniprot: P05771

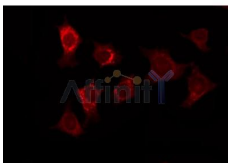
Subcellular Location: Cytoplasm. Nucleus. Membrane.

Similarity: Belongs to the protein kinase superfamily. AGC Ser/Thr protein kinase family. PKC subfamily.

Storage Condition and Buffer: Rabbit IgG in phosphate buffered saline , pH 7.4, 150mM NaCl, 0.02% sodium azide and 50% glycerol.Store at -20 °C.Stable for 12 months from date of receipt



Western blot analysis PRKCB1 (Phospho-Thr500) using Na3VO4 treated HepG2 whole cell lysates



AF8397 staining HeLa by IF/ICC. The sample were fixed with PFA and permeabilized in 0.1% Triton X-100,then blocked in 10% serum for 45 minutes at 25°C. The primary Ab was diluted at 1/200 and incubated with the sample for 1 hour at 37°C. An Alexa Fluor 594 conjugated goat anti-rabbit IgG (H+L) Ab, diluted at 1/600, was used as the secondary Ab.

IMPORTANT: For western blot, incubate membrane with diluted Ab in 5%



Affinity Biosciences

website: www.affbiotech.com

order: order@affbiotech.com

w/v milk , 1X TBS, 0.1% Tween@20 at 4°C with gentle shaking, overnight.

For Research Use Only. Not for use in diagnostic and therapeutic procedures. Not for resale without express authorization.