

PRKCG (Phospho-Thr655) Ab

Cat.#: AF8398	Concn.: 1mg/ml	Mol.Wt.: 75 KD
Size: 50ul,100ul,200ul	Source: Rabbit	Clonality: Polyclonal

Application: WB 1:1000-3000

Reactivity: Human,Mouse,Rat

Purification: The Ab is from purified rabbit serum by affinity purification via sequential chromatography on phospho- and non-phospho-peptide affinity columns.

Specificity: PRKCG (Phospho-Thr655) Ab detects endogenous levels of PRKCG only when phosphorylated at Thr655

Immunogen: A synthesized peptide derived from human PRKCG (Phospho-Thr655)

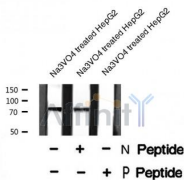
Uniprot: P05129

Subcellular Location: Cytoplasm. Cell membrane. Mitochondrion membrane. Nucleus.

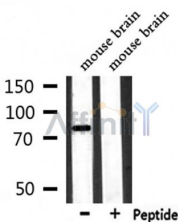
Tissue Specificity: Expressed in Purkinje cells of the cerebellar cortex.

Similarity: Belongs to the protein kinase superfamily. AGC Ser/Thr protein kinase family. PKC subfamily.

Storage Condition and Buffer: Rabbit IgG in phosphate buffered saline , pH 7.4, 150mM NaCl, 0.02% sodium azide and 50% glycerol.Store at -20 °C.Stable for 12 months from date of receipt



Western blot analysis PRKCG (Phospho-Thr655) using Na3VO4 treated HepG2 whole cell lysates



Western blot analysis of extracts from mouse brain, using PRKCG (Phospho-Thr655) Ab.

IMPORTANT: For western blot, incubate membrane with diluted Ab in 5% w/v milk , 1X TBS, 0.1% Tween@20 at 4°C with gentle shaking, overnight.

For Research Use Only. Not for use in diagnostic and therapeutic procedures. Not for resale without express authorization.