

VCL (Phospho-Tyr1133/1065) Ab

Cat.#: AF8406
Size: 50ul,100ul,200ul

Concn.: 1mg/ml
Source: Rabbit

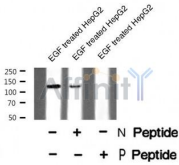
Mol.Wt.: 123kDa
Clonality: Polyclonal

Application:	WB 1:1000-3000
Reactivity:	Human,Mouse,Rat
Purification:	The Ab is from purified rabbit serum by affinity purification via sequential chromatography on phospho- and non-phospho-peptide affinity columns.
Specificity:	VCL (Phospho-Tyr1133/1065) Ab detects endogenous levels of VCL only when phosphorylated at Tyr1133/1065
Immunogen:	A synthesized peptide derived from human VCL (Phospho-Tyr1133/1065)
Uniprot:	P18206
Subcellular Location:	Cytoplasm > cytoskeleton. Cell junction > adherens junction. Cell membrane. Cytoplasmic face of adhesion plaques. Recruitment to cell-cell junctions occurs in a myosin II-dependent manner. Interaction with CTNNB1 is necessary for its localization to the cell-cell junctions.
Tissue Specificity:	Metavinculin is muscle-specific.
Similarity:	Exists in at least two conformations. When in the closed, 'inactive' conformation, extensive interactions between the head and tail domains prevent detectable binding to most of its ligands. It takes on an 'active' conformation after cooperative and simultaneous binding of two different ligands. This activation involves displacement of the head-tail interactions and leads to a significant accumulation of ternary complexes. The active form then binds a number of proteins that have both signaling and structural roles that are essential for cell adhesion.The N-terminal globular head (Vh) comprises of subdomains D1-D4. The C-terminal tail (Vt) binds F-actin and cross-links actin filaments into bundles. In isoform 2 (metavinculin) a 68 residue insertion in the tail domain promotes actin severing instead of bundling. An intramolecular interaction between Vh and Vt masks the F-actin-binding domain located in Vt. The binding of talin and alpha-actinin to the D1 subdomain of vinculin induces a helical bundle conversion of this subdomain, leading to the disruption of the intramolecular interaction and the exposure of the cryptic F-actin-binding domain of Vt. Vt inhibits actin filament barbed end elongation without affecting the critical concentration of actin assembly.Belongs to the

vinculin/alpha-catenin family.

Storage Condition and Buffer:

Rabbit IgG in phosphate buffered saline , pH 7.4, 150mM NaCl, 0.02% sodium azide and 50% glycerol.Store at -20 °C.Stable for 12 months from date of receipt



Western blot analysis VCL (Phospho-Tyr1133/1065) using EGF treated HepG2 whole cell lysates

IMPORTANT: For western blot, incubate membrane with diluted Ab in 5% w/v milk , 1X TBS, 0.1% Tween@20 at 4°C with gentle shaking, overnight.

For Research Use Only. Not for use in diagnostic and therapeutic procedures. Not for resale without express authorization.