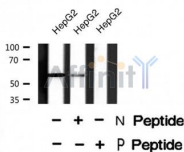


TGFBR1 (Phospho-Thr204) Ab

Cat.#: AF8456	Concn.: 1mg/ml	Mol.Wt.: 56 kDa.
Size: 50ul,100ul,200ul	Source: Rabbit	Clonality: Polyclonal

Application:	WB 1:1000-3000
Reactivity:	Human,Mouse,Rat
Purification:	The Ab is from purified rabbit serum by affinity purification via sequential chromatography on phospho- and non-phospho-peptide affinity columns.
Specificity:	TGFBR1 (Phospho-Thr204) Ab detects endogenous levels of TGFBR1 only when phosphorylated at Thr204
Immunogen:	A synthesized peptide derived from human TGFBR1 (Phospho-Thr204)
Uniprot:	P36897
Subcellular Location:	Membrane.
Tissue Specificity:	Found in all tissues examined, most abundant in placenta and least abundant in brain and heart. Expressed in a variety of cancer cell lines (PubMed:25893292).
Similarity:	Belongs to the protein kinase superfamily. TKL Ser/Thr protein kinase family. TGFB receptor subfamily.
Storage Condition and Buffer:	Rabbit IgG in phosphate buffered saline , pH 7.4, 150mM NaCl, 0.02% sodium azide and 50% glycerol.Store at -20 °C.Stable for 12 months from date of receipt



Western blot analysis TGFBR1 (Phospho-Thr204) using HepG2 whole cell lysates

IMPORTANT: For western blot, incubate membrane with diluted Ab in 5% w/v milk , 1X TBS, 0.1% Tween@20 at 4°C with gentle shaking, overnight.

For Research Use Only. Not for use in diagnostic and therapeutic procedures. Not for resale without express authorization.