

14-3-3 σ (Phospho-Ser186) Ab

Cat.#: AF8458 Concn.: 1mg/ml Mol.Wt.: 28kDa
Size: 50ul,100ul,200ul Source: Rabbit Clonality: Polyclonal

Application: WB 1:1000-3000

Reactivity: Mouse,Human

Purification: The Ab is from purified rabbit serum by affinity purification via sequential chromatography on phospho- and non-phospho-peptide affinity columns.

Specificity: 14-3-3 σ (Phospho-Ser186) Ab detects endogenous levels of 14-3-3 σ only when phosphorylated at Ser186

Immunogen: A synthesized peptide derived from human 14-3-3 σ (Phospho-Ser186)

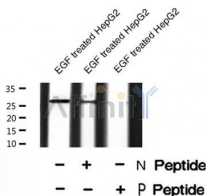
Uniprot: P31947

Subcellular Location: Cytoplasm. Nucleus. Secreted. May be secreted by a non-classical secretory pathway.

Tissue Specificity: Present mainly in tissues enriched in stratified squamous keratinizing epithelium.

Similarity: Belongs to the 14-3-3 family.

Storage Condition and Buffer: Rabbit IgG in phosphate buffered saline , pH 7.4, 150mM NaCl, 0.02% sodium azide and 50% glycerol.Store at -20 °C.Stable for 12 months from date of receipt



Western blot analysis of 14-3-3 σ (Phospho-Ser186) Ab expression in EGF treated HepG2 cells lysates.

IMPORTANT: For western blot, incubate membrane with diluted Ab in 5% w/v milk , 1X TBS, 0.1% Tween@20 at 4°C with gentle shaking, overnight.

For Research Use Only. Not for use in diagnostic and therapeutic procedures. Not for resale without express authorization.