

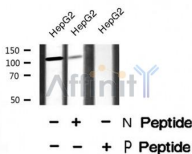
## ATP1A1 (Phospho-Tyr260) Ab

Cat.#: AF8462  
Size: 50ul,100ul,200ul

Concn.: 1mg/ml  
Source: Rabbit

Mol.Wt.: 112kDa  
Clonality: Polyclonal

Application:	WB 1:1000-3000, IF/ICC 1:100-1:500
Reactivity:	Human,Mouse,Rat
Purification:	The Ab is from purified rabbit serum by affinity purification via sequential chromatography on phospho- and non-phospho-peptide affinity columns.
Specificity:	ATP1A1 (Phospho-Tyr260) Ab detects endogenous levels of ATP1A1 only when phosphorylated at Tyr260
Immunogen:	A synthesized peptide derived from human ATP1A1 (Phospho-Tyr260)
Uniprot:	P05023
Subcellular Location:	Cell membrane. Melanosome. Identified by mass spectrometry in melanosome fractions from stage I to stage IV.
Similarity:	Belongs to the cation transport ATPase (P-type) (TC 3.A.3) family. Type IIC subfamily. [View classification]
Storage Condition and Buffer:	Rabbit IgG in phosphate buffered saline , pH 7.4, 150mM NaCl, 0.02% sodium azide and 50% glycerol.Store at -20 °C.Stable for 12 months from date of receipt



Western blot analysis ATP1A1 (Phospho-Tyr260) using HepG2 whole cell lysates



AF8462 staining 293 cells by IF/ICC. The sample were fixed with PFA and permeabilized in 0.1% Triton X-100,then blocked in 10% serum for 45 minutes at 25°C. The primary Ab was diluted at 1/200 and incubated with the sample for 1 hour at 37°C. An Alexa Fluor 594 conjugated goat anti-rabbit IgG (H+L) Ab(Cat.# S0006), diluted at 1/600, was used as secondary Ab.

**IMPORTANT:** For western blot, incubate membrane with diluted Ab in 5% w/v milk , 1X TBS, 0.1% Tween@20 at 4°C with gentle shaking, overnight.

For Research Use Only. Not for use in diagnostic and therapeutic procedures. Not for resale without express authorization.