

PDHA1/2 (Phospho-Ser293/291) Ab

Cat.#: AF8502 Concn.: 1mg/ml Mol.Wt.: 43 kDa
 Size: 50ul,100ul,200ul Source: Rabbit Clonality: Polyclonal

Application: WB 1:1000-3000

Reactivity: Human,Mouse,Rat

Purification: The Ab is from purified rabbit serum by affinity purification via sequential chromatography on phospho- and non-phospho-peptide affinity columns.

Specificity: PDHA1/2 (Phospho-Ser293/291) Ab detects endogenous levels of PDHA1/2 only when phosphorylated at Ser293/291

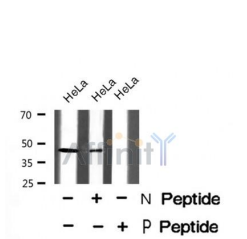
Immunogen: A synthesized peptide derived from human PDHA1/2 (Phospho-Ser293/291)

Uniprot: P08559/P29803

Subcellular Location: Mitochondrion matrix.

Tissue Specificity: Ubiquitous.

Storage Condition and Buffer: Rabbit IgG in phosphate buffered saline , pH 7.4, 150mM NaCl, 0.02% sodium azide and 50% glycerol.Store at -20 °C.Stable for 12 months from date of receipt



Western blot analysis PDHA1/2 (Phospho-Ser293/291) using HeLa whole cell lysates

IMPORTANT: For western blot, incubate membrane with diluted Ab in 5% w/v milk , 1X TBS, 0.1% Tween@20 at 4°C with gentle shaking, overnight.

For Research Use Only. Not for use in diagnostic and therapeutic procedures. Not for resale without express authorization.