

## TRF2 (Phospho-Ser323) Ab

Cat.#: AF8519	Concn.: 1mg/ml	Mol.Wt.: 60kDa
Size: 50ul,100ul,200ul	Source: Rabbit	Clonality: Polyclonal

**Application:** WB 1:1000-3000

**Reactivity:** Human

**Purification:** The Ab is from purified rabbit serum by affinity purification via sequential chromatography on phospho- and non-phospho-peptide affinity columns.

**Specificity:** TRF2 (Phospho-Ser323) Ab detects endogenous levels of TRF2 only when phosphorylated at Ser323

**Immunogen:** A synthesized peptide derived from human TRF2 (Phospho-Ser323)

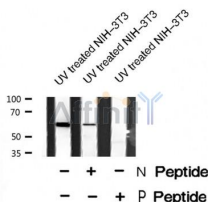
**Uniprot:** Q15554

**Subcellular Location:** Nucleus. Chromosome > telomere. Colocalizes with telomeric DNA in interphase cells and is located at chromosome ends during metaphase.

**Tissue Specificity:** Ubiquitous. Highly expressed in spleen, thymus, prostate, uterus, testis, small intestine, colon and peripheral blood leukocytes.

**Similarity:** The TRFH dimerization region mediates the interaction with DCLRE1B/Apollo but not TINF2. The HTH domain is an independent structural unit and mediates binding to telomeric DNA.

**Storage Condition and Buffer:** Rabbit IgG in phosphate buffered saline , pH 7.4, 150mM NaCl, 0.02% sodium azide and 50% glycerol.Store at -20 °C.Stable for 12 months from date of receipt



Western blot analysis TRF2 (Phospho-Ser323) using UV treated NIH-3T3 whole cell lysates

**IMPORTANT:** For western blot, incubate membrane with diluted Ab in 5% w/v milk , 1X TBS, 0.1% Tween@20 at 4°C with gentle shaking, overnight.



**Affinity Biosciences**

website:[www.affbiotech.com](http://www.affbiotech.com)

order:[order@affbiotech.com](mailto:order@affbiotech.com)

---

For Research Use Only. Not for use in diagnostic and therapeutic procedures. Not for resale without express authorization.