

APA079Hu01 100µg

Active Interleukin 6 (IL6)

Organism Species: Homo sapiens (Human)

Instruction manual

FOR IN VITRO USE AND RESEARCH USE ONLY
NOT FOR USE IN CLINICAL DIAGNOSTIC PROCEDURES

1th Edition (Apr, 2016)

[PROPERTIES]

Source: Prokaryotic expression.

Host: *E. coli*

Residues: Pro29~Met212

Tags: N-terminal GST-his-Tag

Purity: >95%

Buffer Formulation: 20mM Tris, 150mM NaCl, pH8.0, containing 0.05% sarcosyl and 5% trehalose.

Applications: Cell culture; Activity Assays; In vivo assays.

(May be suitable for use in other assays to be determined by the end user.)

Predicted isoelectric point: 6.0

Predicted Molecular Mass: 46.9kDa

Accurate Molecular Mass: 47kDa as determined by SDS-PAGE reducing conditions.

[USAGE]

Reconstitute in 20mM Tris, 150mM NaCl (pH8.0) to a concentration of 0.1-1.0 mg/mL. Do not vortex.

[STORAGE AND STABILITY]

Storage: Avoid repeated freeze/thaw cycles.

Store at 2-8°C for one month.

Aliquot and store at -80°C for 12 months.

Stability Test: The thermal stability is described by the loss rate. The loss rate was determined by accelerated thermal degradation test, that is, incubate the protein at 37°C for 48h, and no obvious degradation and precipitation were observed. The loss rate is less than 5% within the expiration date under appropriate storage condition.

[SEQUENCE]

```

PV PPGEDSKDVA APHRQPLTSS
ERIDKQIRYI LDGISALRKE TCNKSNCES SKEALAENNL NLPKMAEKDG
CFQSGFNEET CLVKIITGLL EFEVYLEYLQ NRFESSEEQA RAVQMSTKVL
IQFLQKKAKN LDAITTPDPT TNASLLTKLQ AQNQWLQDMT THLILRSFKE
FLQSSLRALR QM
    
```

[ACTIVITY]

Interleukin-6 (IL-6), a pro-inflammatory cytokine and an anti-inflammatory myokine, plays important roles in the acute phase reaction, inflammation, hematopoiesis, bone metabolism, and cancer progression. It has been reported that IL-6 significantly increased the MMP-10 protein level in the human lung cancer A549 cells through the JAK/STAT signaling pathway. Briefly, A549 cells were seeded into 6-well cell culture clusters and allowed to grow to 50-70% confluence, then different concentrations of IL-6 was added. After incubated for 24h, the protein levels of MMP-10 in the cell supernatant were determined by Western blot.

MMP-10 protein level significantly increased in A549 cells due to the stimulation of IL-6, the data was shown in Figure 1.

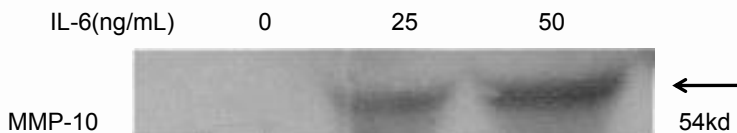


Figure 1. Effect of Human IL-6 on MMP-10 protein levels in A549 cells.

[**IDENTIFICATION**]

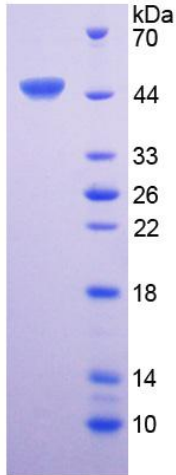


Figure 2. SDS-PAGE

Sample: Active recombinant IL6, Human

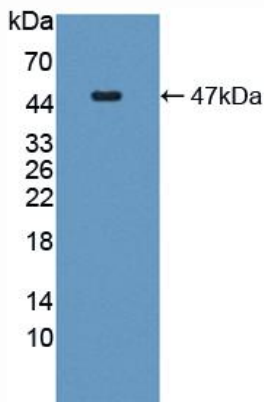


Figure 3. Western Blot

Sample: Recombinant IL6, Human;

Antibody: Rabbit Anti-Human IL6 Ab (PAA079Hu01)