

Overview

Alternative names	Spike glycoprotein,Spike protein S1(S1)
Source	Human (kappa / IgG1 constant) chimeric antibody
Specificity	Recognizes SARS-CoV-2 S1 Protein
Description	Recombinant anti-SARS-CoV-2 S1 antibody is expressed from XtenCHO
Isotype	Human IgG1
Species Reactivity	Severe acute respiratory syndrome coronavirus 2 (SARS-CoV-2),SARS-COV
Clonality	Monoclonal
Conjugation	Unconjugated
Immunogen	Recombinant SARS-CoV-2 S1 protein
Purification	Affinity-chromatography

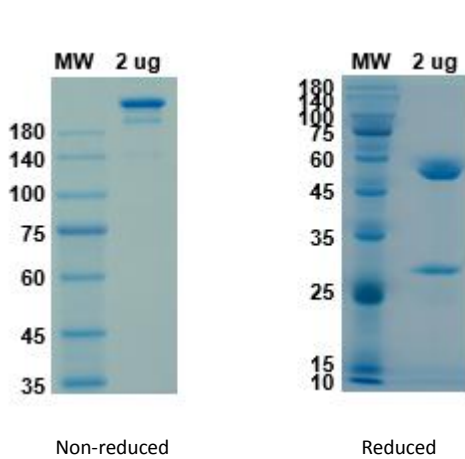
Specifications

Tested applications	WB , ELISA
Dilution Range	WB:1:1000-2000; ELISA:1:5000-1:10000
Concentration	2 mg/ml
Form	Liquid
Buffer	PBS,pH7.5

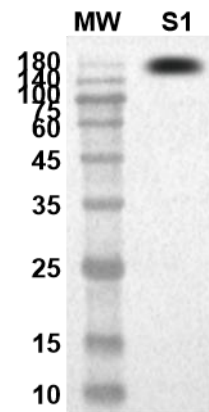
Preparation and storage

Shipping	In general, products are shipped out with blue ice unless customers require otherwise.
Stability &Storage	Use a manual defrost freezer and avoid repeated freeze thaw cycles. Store at 2 to 8 °C for one week . Store at -20 to -80 °C for twelve months from the date of receipt.

Tested Picture



Coomassie blue staining non-reduced and reduced
SDS-PAGE analysis



WB result of S1 protein by using anti-SARS-CoV-2 (S1) -4
antibody at dilution of 1:2000

Note

For research use only .Not for use in clinical diagnostic procedures.