

## PSAP Ab

Cat.#: BF0001	Concn.: 1mg/ml	Mol.Wt.: 58.1kDa
Size: 50ul,100ul,200ul	Source: Mouse	Clonality: Monoclonal

**Application:** ELISA 1/10000, WB 1/500 - 1/2000, IHC 1/200 - 1/1000, ICC 1/200 - 1/1000, FCM 1/200 - 1/400

**Reactivity:** Human

**Purification:** Affinity-chromatography.

**Specificity:** PSAP Ab detects endogenous levels of total PSAP.

**Immunogen:** Purified recombinant fragment of human PSAP expressed in E. Coli.

**Uniprot:** P07602

**Description:** This gene encodes a highly conserved glycoprotein which is a precursor for 4 cleavage products: saposins A, B, C, and D. Each domain of the precursor protein is approximately 80 amino acid residues long with nearly identical placement of cysteine residues and glycosylation sites. Saposins A-D localize primarily to the lysosomal compartment where they facilitate the catabolism of glycosphingolipids with short oligosaccharide groups. The precursor protein exists both as a secretory protein and as an integral membrane protein and has neurotrophic activities. Mutations in this gene have been associated with Gaucher disease, Tay-Sachs disease, and metachromatic leukodystrophy. Alternative splicing results in multiple transcript variants encoding different isoforms.

**Subcellular Location:** Lysosome.

**Storage Condition and Buffer:** Mouse IgG1 in phosphate buffered saline (without Mg<sup>2+</sup> and Ca<sup>2+</sup>), pH 7.4, 150mM NaCl, 0.02% sodium azide and 50% glycerol.Store at -20 °C.Stable for 12 months from date of receipt.

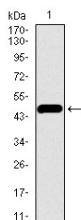
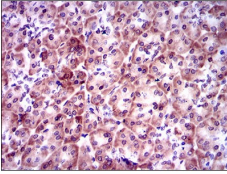
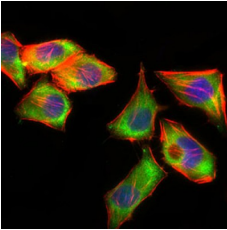


Figure 1: Western blot analysis using PSAP mAb against human PSAP recombinant protein. (Expected MW is 47.8 kDa)



Immunohistochemical analysis of paraffin-embedded pancreas tissues using PSAP mouse mAb with DAB staining.



Immunofluorescence analysis of HepG2 cells using PSAP mouse mAb (green). Blue: DRAQ5 fluorescent DNA dye. Red: Actin filaments have been labeled with Alexa Fluor-555 phalloidin.

**IMPORTANT:** For western blot, incubate membrane with diluted primary Ab in 5% w/v milk , 1X TBS, 0.1% Tween@20 at 4°C with gentle shaking, overnight.

For Research Use Only. Not for use in diagnostic and therapeutic procedures. Not for resale without express authorization.