

## AICAM Ab

Cat.#: BF0029  
Size: 50ul,100ul,200ul

Concn.: 1mg/ml  
Source: Mouse

Mol.Wt.: 65.1kDa  
Clonality: Monoclonal

Application:	ELISA 1/10000, WB 1/500 - 1/2000, IHC 1/200 - 1/1000
Reactivity:	Human
Purification:	Affinity-chromatography.
Specificity:	AICAM Ab detects endogenous levels of total AICAM.
Immunogen:	Purified recombinant fragment of human AICAM expressed in E. Coli.
Uniprot:	Q13740
Description:	This gene encodes activated leukocyte cell adhesion molecule (ALCAM), also known as CD166 (cluster of differentiation 166), which is a member of a subfamily of immunoglobulin receptors with five immunoglobulin-like domains (VVC2C2C2) in the extracellular domain. This protein binds to T-cell differentiation antigene CD6, and is implicated in the processes of cell adhesion and migration. Multiple alternatively spliced transcript variants encoding different isoforms have been found.
Subcellular Location:	Membrane.
Tissue Specificity:	Detected on hematopoietic stem cells derived from umbilical cord blood (PubMed:24740813). Detected on lymph vessel endothelial cells, skin and tonsil (PubMed:23169771). Detected on peripheral blood monocytes (PubMed:15048703). Detected on monocyte-derived dendritic cells (at protein level) (PubMed:16352806). Detected at low levels in spleen, placenta, liver (PubMed:9502422). Expressed by activated T-cells, B-cells, monocytes and thymic epithelial cells (PubMed:7760007). Isoform 1 and isoform 3 are detected in vein and artery endothelial cells, astrocytes, keratinocytes and artery smooth muscle cells (PubMed:15496415). Expressed by neurons in the brain. Restricted expression in tumor cell lines. Detected in highly metastasizing melanoma cell lines (PubMed:9502422).
Similarity:	The CD6 binding site is located in the N-terminal Ig-like domain.
Storage Condition and Buffer:	Mouse IgG1 in phosphate buffered saline (without Mg <sup>2+</sup> and Ca <sup>2+</sup> ), pH 7.4, 150mM NaCl, 0.02% sodium azide and 50%

glycerol.Store at -20 °C.Stable for 12 months from date of receipt.

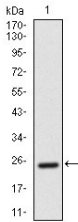


Figure 1: Western blot analysis using AICAM mAb against human AICAM recombinant protein. (Expected MW is 26.3 kDa)

**IMPORTANT:** For western blot, incubate membrane with diluted primary Ab in 5% w/v milk , 1X TBS, 0.1% Tween@20 at 4°C with gentle shaking, overnight.

For Research Use Only. Not for use in diagnostic and therapeutic procedures. Not for resale without express authorization.