

RAG1 Ab

Cat.#: BF0038
Size: 50ul,100ul,200ul

Concn.: 1mg/ml
Source: Mouse

Mol.Wt.: 119kDa
Clonality: Monoclonal

| | |
|-------------------------------|---|
| Application: | ELISA 1/10000, WB 1/500 - 1/2000 |
| Reactivity: | Human |
| Purification: | Affinity-chromatography. |
| Specificity: | RAG1 Ab detects endogenous levels of total RAG1. |
| Immunogen: | Purified recombinant fragment of human RAG1 expressed in E. Coli. |
| Uniprot: | P15918 |
| Description: | The protein encoded by this gene is involved in activation of immunoglobulin V-D-J recombination. The encoded protein is involved in recognition of the DNA substrate, but stable binding and cleavage activity also requires RAG2. Defects in this gene can be the cause of several diseases. |
| Subcellular Location: | Nucleus. |
| Tissue Specificity: | Maturing lymphoid cells. |
| Similarity: | The RING-type zinc finger mediates the E3 ubiquitin-protein ligase activity.The NBD (nonamer binding) DNA-binding domain mediates the specific binding to the nonamer RSS motif by forming a tightly interwoven homodimer that binds and synapses 2 nonamer elements, with each NBD making contact with both DNA molecules. Each RSS is composed of well-conserved heptamer (consensus 5'-CACAGTG-3') and nonamer (consensus 5'-ACAAAACC-3') sequences separated by a spacer of either 12 bp or 23 bp.Belongs to the RAG1 family. |
| Storage Condition and Buffer: | Mouse IgG1 in phosphate buffered saline (without Mg ²⁺ and Ca ²⁺), pH 7.4, 150mM NaCl, 0.02% sodium azide and 50% glycerol.Store at -20 °C.Stable for 12 months from date of receipt. |

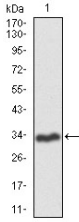


Figure 1: Western blot analysis using RAG1 mAb against human RAG1 recombinant protein. (Expected MW is 31.6 kDa)

IMPORTANT: For western blot, incubate membrane with diluted primary Ab in 5% w/v milk , 1X TBS, 0.1% Tween@20 at 4°C with gentle shaking, overnight.

For Research Use Only. Not for use in diagnostic and therapeutic procedures. Not for resale without express authorization.