

PRKACG Ab

Cat.#: BF0052
Size: 50ul,100ul,200ul

Concn.: 1mg/ml
Source: Mouse

Mol.Wt.: 40.4kDa
Clonality: Monoclonal

Application:	ELISA 1/10000, WB 1/500 - 1/2000, IHC 1/200 - 1/1000, FCM 1/200 - 1/400
Reactivity:	Human
Purification:	Affinity-chromatography.
Specificity:	PRKACG Ab detects endogenous levels of total PRKACG.
Immunogen:	Purified recombinant fragment of human PRKACG expressed in E. Coli.
Uniprot:	P22612
Description:	Cyclic AMP-dependent protein kinase (PKA) consists of two catalytic subunits and a regulatory subunit dimer. This gene encodes the gamma form of its catalytic subunit.
Tissue Specificity:	Testis specific. But important tissues such as brain and ovary have not been analyzed for the content of transcript.
Similarity:	Belongs to the protein kinase superfamily. AGC Ser/Thr protein kinase family. cAMP subfamily.
Storage Condition and Buffer:	Mouse IgG1 in phosphate buffered saline (without Mg ²⁺ and Ca ²⁺), pH 7.4, 150mM NaCl, 0.02% sodium azide and 50% glycerol.Store at -20 °C.Stable for 12 months from date of receipt.

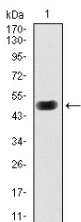


Figure 1: Western blot analysis using PRKACG mAb against human PRKACG (AA: 164-351) recombinant protein. (Expected MW is 47.1 kDa)

IMPORTANT: For western blot, incubate membrane with diluted primary Ab in 5% w/v milk , 1X TBS, 0.1% Tween@20 at 4°C with gentle shaking, overnight.