

EGF Ab

Cat.#: BF0066 Concn.: 1mg/ml Mol.Wt.: 134kDa
Size: 50ul,100ul,200ul Source: Mouse Clonality: Monoclonal

Application: ELISA 1/10000, WB 1/500 - 1/2000, ICC 1/200 - 1/1000

Reactivity: Human

Purification: Affinity-chromatography.

Specificity: EGF Ab detects endogenous levels of total EGF.

Immunogen: Purified recombinant fragment of human EGF expressed in E. Coli.

Uniprot: P01133

Description: Epidermal growth factor has a profound effect on the differentiation of specific cells in vivo and is a potent mitogenic factor for a variety of cultured cells of both ectodermal and mesodermal origin. The EGF precursor is believed to exist as a membrane-bound molecule which is proteolytically cleaved to generate the 53-amino acid peptide hormone that stimulates cells to divide.

Subcellular Location: Membrane.

Tissue Specificity: Expressed in kidney, salivary gland, cerebrum and prostate.

Storage Condition and Buffer: Mouse IgG1 in phosphate buffered saline (without Mg²⁺ and Ca²⁺), pH 7.4, 150mM NaCl, 0.02% sodium azide and 50% glycerol.Store at -20 °C.Stable for 12 months from date of receipt.

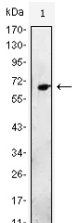


Figure 1: Western blot analysis using EGF mAb against EGF(AA: 971-1023)-hIgGFc transfected HEK293 cell lysate.

IMPORTANT: For western blot, incubate membrane with diluted primary Ab in 5% w/v milk , 1X TBS, 0.1% Tween@20 at 4°C with gentle shaking, overnight.



Affinity Biosciences
website: www.affbiotech.com
order: order@affbiotech.com

procedures. Not for resale without express authorization.