

## CEA Ab

Cat.#: BF0092  
Size: 50ul,100ul,200ul

Concn.: 1mg/ml  
Source: Mouse

Mol.Wt.: 77kDa  
Clonality: Monoclonal

Application:	ELISA 1/10000, WB 1/500 - 1/2000, IHC 1/200 ICC 1/200 - 1/1000
Reactivity:	Human
Purification:	Affinity-chromatography.
Specificity:	CEA Ab detects endogenous levels of total CEA.
Immunogen:	Purified recombinant fragment of human CEA expressed in E. Coli.
Uniprot:	P06731
Description:	Carcino Embryonic Antigen (CEA) is synthesised during development in the fetal gut, and is re-expressed in increased amounts in intestinal carcinomas and several other tumors. Antibodies to CEA are useful in identifying the origin of various metastatic adenocarcinomas and in distinguishing pulmonary adenocarcinomas (60 to 70% are CEA+) from pleural mesotheliomas (rarely or weakly CEA+).
Subcellular Location:	Cell membrane.
Tissue Specificity:	Found in adenocarcinomas of endodermally derived digestive system epithelium and fetal colon.
Similarity:	Belongs to the immunoglobulin superfamily. CEA family.
Storage Condition and Buffer:	Mouse IgG1 in phosphate buffered saline (without Mg <sup>2+</sup> and Ca <sup>2+</sup> ), pH 7.4, 150mM NaCl, 0.02% sodium azide and 50% glycerol.Store at -20 °C.Stable for 12 months from date of receipt.

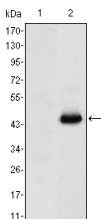


Figure 1: Western blot analysis using CEA mAb against HEK293 (1) and CEA(AA: 460-600)-hlgGfC transfected HEK293 (2) cell lysate.

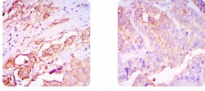


Figure 2. Immunohistochemical analysis of papilloma-infective rectum cancer tissues (left) and adenoma cancer tissues (right) using CD44 mouse mAb with DAB staining.

This image is a courtesy of anonymous review.

**IMPORTANT:** For western blot, incubate membrane with diluted primary Ab in 5% w/v milk , 1X TBS, 0.1% Tween@20 at 4°C with gentle shaking, overnight.

For Research Use Only. Not for use in diagnostic and therapeutic procedures. Not for resale without express authorization.