

## CRP Ab

Cat.#: BF0116  
Size: 50ul,100ul,200ul

Concn.: 1mg/ml  
Source: Mouse

Mol.Wt.: 25kDa  
Clonality: Monoclonal

Application: ELISA 1/10000, WB 1/500 - 1/2000, IHC 1/200 - 1/1000, FCM 1/200 - 1/400

Reactivity: Human

Purification: Affinity-chromatography.

Specificity: CRP Ab detects endogenous levels of total CRP.

Immunogen: Purified recombinant fragment of human CRP expressed in E. Coli.

Uniprot: P02741

Description: The protein encoded by this gene belongs to the pentaxin family. It is involved in several host defense related functions based on its ability to recognize foreign pathogens and damaged cells of the host and to initiate their elimination by interacting with humoral and cellular effector systems in the blood. Consequently, the level of this protein in plasma increases greatly during acute phase response to tissue injury, infection, or other inflammatory stimuli.

Subcellular Location: Secreted.

Tissue Specificity: Found in plasma.

Similarity: Belongs to the pentraxin family.

Storage Condition and Buffer: Mouse IgG1 in phosphate buffered saline (without Mg<sup>2+</sup> and Ca<sup>2+</sup>), pH 7.4, 150mM NaCl, 0.02% sodium azide and 50% glycerol.Store at -20 °C.Stable for 12 months from date of receipt.

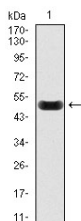


Figure 1: Western blot analysis using CRP mAb against human CRP recombinant protein. ( AA: 1-224, Expected MW is 51 kDa)

in 5% w/v milk , 1X TBS, 0.1% Tween@20 at 4°C with gentle shaking,  
overnight.

For Research Use Only. Not for use in diagnostic and therapeutic  
procedures. Not for resale without express authorization.