

HK1 Ab

Cat.#: BF0126
Size: 50ul,100ul,200ul

Concn.: 1mg/ml
Source: Mouse

Mol.Wt.: 102kDa
Clonality: Monoclonal

Application:	ELISA 1/10000, WB 1/500 - 1/2000, IHC 1/200 - 1/1000, ICC 1/200 - 1/1000
Reactivity:	Human,Mouse,Rat
Purification:	Affinity-chromatography.
Specificity:	HK1 Ab detects endogenous levels of total HK1.
Immunogen:	Purified recombinant fragment of human HK1 expressed in E. Coli.
Uniprot:	P19367
Description:	Hexokinases phosphorylate glucose to produce glucose-6-phosphate, thus committing glucose to the glycolytic pathway. This gene encodes a ubiquitous form of hexokinase which localizes to the outer membrane of mitochondria. Mutations in this gene have been associated with hemolytic anemia due to hexokinase deficiency. Alternative splicing of this gene results in five transcript variants which encode different isoforms, some of which are tissue-specific. Each isoform has a distinct N-terminus; the remainder of the protein is identical among all the isoforms. A sixth transcript variant has been described, but due to the presence of several stop codons, it is not thought to encode a protein.
Subcellular Location:	Mitochondrion outer membrane. Its hydrophobic N-terminal sequence may be involved in membrane binding.
Tissue Specificity:	Isoform 2 is erythrocyte specific. Isoform 3 and isoform 4 are testis-specific.
Similarity:	The N- and C-terminal halves of this hexokinase show extensive sequence similarity to each other. The catalytic activity is associated with the C-terminus while regulatory function is associated with the N-terminus. Each domain can bind a single glucose and Gluc-6-P molecule.Belongs to the hexokinase family.
Storage Condition and Buffer:	Mouse IgG1 in phosphate buffered saline (without Mg ²⁺ and Ca ²⁺), pH 7.4, 150mM NaCl, 0.02% sodium azide and 50% glycerol.Store at -20 °C.Stable for 12 months from date of receipt.

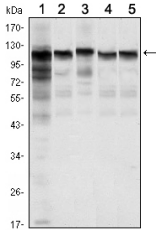


Figure 1: Western blot analysis using HK1 mouse mAb against Jurkat (1), Hela (2), HepG2 (3), MCF-7 (4) and PC-12 (5) cell lysate.

IMPORTANT: For western blot, incubate membrane with diluted primary Ab in 5% w/v milk , 1X TBS, 0.1% Tween@20 at 4°C with gentle shaking, overnight.

For Research Use Only. Not for use in diagnostic and therapeutic procedures. Not for resale without express authorization.