

Proteinase 3 Ab

Cat.#: BF0163	Concn.: 1mg/ml	Mol.Wt.: 28kDa
Size: 50ul,100ul,200ul	Source: Mouse	Clonality: Monoclonal

Application:	ELISA 1/10000, WB 1/500 - 1/2000
Reactivity:	Human
Purification:	Affinity-chromatography.
Specificity:	Proteinase 3 Ab detects endogenous levels of total Proteinase 3.
Immunogen:	Purified recombinant fragment of human Proteinase 3 expressed in E. Coli.
Uniprot:	P24158
Description:	Proteinase 3, also known as PRTN3. PRTN3 is a serine protease enzyme expressed mainly in neutrophil granulocytes. Its exact role in the function of the neutrophil is unknown but in human neutrophils proteinase 3 contributes to the proteolytic generation of antimicrobial peptides. It is also the epitope of anti-neutrophil cytoplasmic antibodies (ANCA) of the cANCA (cytoplasmic subtype) class, a type of antibody frequently found in the disease Wegener's granulomatosis.
Subcellular Location:	Extracellular region or secreted;Plasma membrane;
Tissue Specificity:	Expressed in polymorphonuclear leukocytes (at protein level) (PubMed:2033050, PubMed:7897245, PubMed:3198760). Expressed in neutrophils (at protein level) (PubMed:28240246, PubMed:18462208, PubMed:21193407, PubMed:22266279, PubMed:17244676). Expressed in differentiating neutrophils (PubMed:18462208).
Similarity:	Belongs to the peptidase S1 family. Elastase subfamily.
Storage Condition and Buffer:	Mouse IgG1 in phosphate buffered saline (without Mg ²⁺ and Ca ²⁺), pH 7.4, 150mM NaCl, 0.02% sodium azide and 50% glycerol.Store at -20 °C.Stable for 12 months from date of receipt.

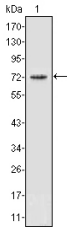


Figure 1: Western blot analysis using PRTN3 mouse mAb against PRTN3 (aa28-256)-hIgGFc transfected HEK293 cell lysate (1).

IMPORTANT: For western blot, incubate membrane with diluted primary Ab in 5% w/v milk , 1X TBS, 0.1% Tween@20 at 4°C with gentle shaking, overnight.

For Research Use Only. Not for use in diagnostic and therapeutic procedures. Not for resale without express authorization.