

ALPL Ab

Cat.#: BF0179
Size: 50ul,100ul,200ul

Concn.: 1mg/ml
Source: Mouse

Mol.Wt.: 57.3kDa
Clonality: Monoclonal

Application: ELISA 1/10000, WB 1/500 - 1/2000, IHC 1/200 - 1/1000, FCM 1/200 - 1/400

Reactivity: Human

Purification: Affinity-chromatography.

Specificity: ALPL Ab detects endogenous levels of total ALPL.

Immunogen: Purified recombinant fragment of human ALPL expressed in E. Coli.

Uniprot: P05186

Description: There are at least four distinct but related alkaline phosphatases: intestinal, placental, placental-like, and liver/bone/kidney (tissue non-specific). The first three are located together on chromosome 2, while the tissue non-specific form is located on chromosome 1. The product of this gene is a membrane bound glycosylated enzyme that is not expressed in any particular tissue and is, therefore, referred to as the tissue-nonspecific form of the enzyme.

Subcellular Location: Cell membrane.

Similarity: Belongs to the alkaline phosphatase family.

Storage Condition and Buffer: Mouse IgG1 in phosphate buffered saline (without Mg²⁺ and Ca²⁺), pH 7.4, 150mM NaCl, 0.02% sodium azide and 50% glycerol. Store at -20 °C. Stable for 12 months from date of receipt.

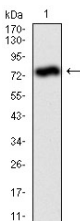


Figure 1: Western blot analysis using ALPL mAb against human ALPL (AA: 18-502) recombinant protein. (Expected MW is 78.9 kDa)

IMPORTANT: For western blot, incubate membrane with diluted primary Ab in 5% w/v milk, 1X TBS, 0.1% Tween@20 at 4°C with gentle shaking, overnight.



Affinity Biosciences

website: www.affbiotech.com

order: order@affbiotech.com

For Research Use Only. Not for use in diagnostic and therapeutic procedures. Not for resale without express authorization.